

Features and Components

High-Density Polyisocyanurate Foam Core: Closed cell polyisocyanurate foam technology provides additional insulation value (R-value of 2.5), with lightweight and high density characteristics.

Glass-Reinforced Facers: Provides rigidity and resistance to indentation and crushing, compatible with all single ply membrane systems.

Lightweight: Offers labor and installation efficiencies and allows more options for situations where the overall weight is a concern*. This also means easy hoisting, staging and maneuvering around the roof.

High R-Value (2.5 R): Provides significantly more thermal insulation (R-value) than wood fiber or gypsum boards*.

User Friendly: ENRGY 3 HD allows easy & efficient scoring, cutting and snapping which permits fast, tight fabrication and all in a low dust environment.

Resistance To Damage: High impact, and compressive strength provides a protective layer for insulation while working with the membrane above to ensure maximum performance and longevity.



Component

B
Cover Board

Multi-Ply
Single Ply

Type

PF
Poly Foam

HD
High Density

System Compatibility This product may be used as a component in the following systems. Please reference product application for specific installation methods and information.

| Multi-Ply | BUR | | APP | | SBS | | | |
|---|-----|----|-----|----|-----|----|----|----|
| | HA | CA | HW | HA | CA | HW | SA | MF |
| <i>Compatible with the selected Multi-Ply systems above</i> | | | | | | | | |

| Single Ply | TPO | | | | PVC | | | EPDM | | |
|--|-----|----|----|----|-----|----|----|------|----|----|
| | MF | AD | SA | IW | MF | AD | IW | MF | AD | BA |
| <i>Compatible with the selected Single Ply systems above</i> | | | | | | | | | | |

Key: HA = Hot Applied CA = Cold Applied HW = Heat Weldable SA = Self Adhered MF = Mechanically Fastened IW = Induction Weld BA = Ballasted AD = Adhered

Energy and the Environment

| | | |
|-------------------|------------------|--------------------|
| LEED [®] | Recycled Content | Pre-Consumer: 3.7% |
| | | Post-Consumer: 0% |

Peak Advantage[®] Guarantee Information

| Systems | Guarantee Term** |
|--|------------------|
| When used in most JM multi-ply or single ply systems | Up to 30 years |

** Contact JM Technical Services for specific systems.

Codes and Approvals



- UL[®] Standard 790 (refer to UL Roofing Materials system directory)

*Based on available third party data sheet information.

Technical specifications as shown in this literature are intended to be used as general guidelines only. Please refer to the Safety Data Sheet and product label prior to using this product. The Safety Data Sheet is available by calling (800) 922-5922 or on the web at www.jm.com/roofing. The physical and chemical properties of the product listed herein represent typical, average values obtained in accordance with accepted test methods and are subject to normal manufacturing variations. They are supplied as a technical service and are subject to change without notice. Check with the regional sales representative nearest you for current information.

Installation/Application



Mechanically Fastened

Typically used as a protective cover board over insulation or an existing roof directly beneath the waterproofing membrane. Refer to the Application Guides and Detail Drawings for instructions.

Packaging and Dimensions

| | |
|--------------------|---|
| Sizes | 4' x 8' x 1/2" (1.22 m x 2.44 m x 12.7 mm) |
| Board Weight | 9 lb (4.1 kg) |
| Coverage/Pallet | 1,856 ft ² |
| Boards/Pallet | 58 |
| Pallet Weight | 522 lb (236.7 kg) |
| Pallets per Truck* | 36 |

Tested in accordance with ASTM C1289

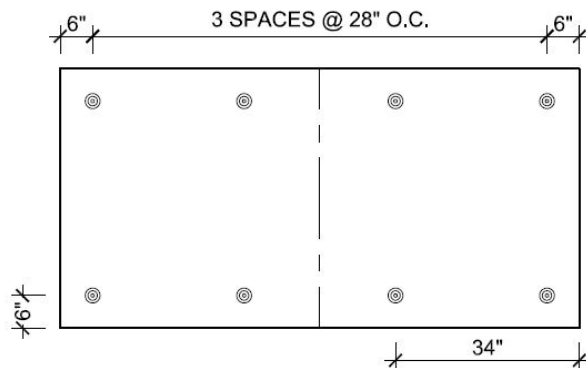
Typical Physical Properties

| Test | ASTM | ENERGY 3 HD Cover Board |
|----------|--|---|
| Strength | Compressive Strength, psi (kPa) | D 1621 80 psi (551 kPa) min |
| | Dimensional Stability, % Linear Change, <i>nom</i> | D 2126 1.0% |
| Moisture | Moisture Vapor Permeance, perm (ng/(Pa•s•m ²)), <i>max</i> | E 96 <1.5 perm, 86.8 ng/(Pa•s•m ²) |
| | Water Absorption, % by vol | C 209 3.0% (<i>max</i>) |

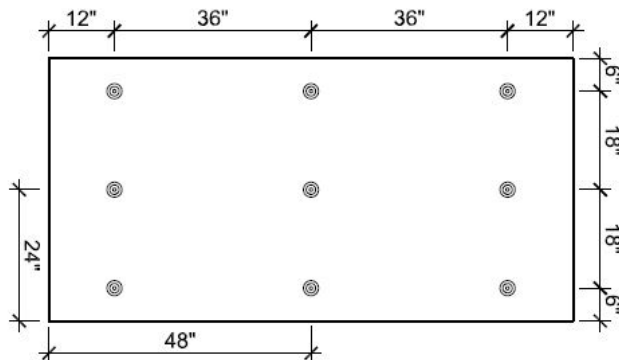
Thermal Performance

| Thickness | | Nominal R-Value (Resistance) (hr•ft ² •°F)/BTU |
|-----------|------|--|
| in | mm | |
| 1/2 | 12.7 | 2.5 |

JM Minimum Pre-securement Pattern when used with a Mechanically Fastened Membrane



JM Minimum Required Fastening Pattern when used with JM Rhinoplate Fastening System



Technical specifications as shown in this literature are intended to be used as general guidelines only. Please refer to the Safety Data Sheet and product label prior to using this product. The Safety Data Sheet is available by calling (800) 922-5922 or on the web at www.jm.com/roofing. The physical and chemical properties of the product listed herein represent typical, average values obtained in accordance with accepted test methods and are subject to normal manufacturing variations. They are supplied as a technical service and are subject to change without notice. Check with the regional sales representative nearest you for current information.

All Johns Manville products are sold subject to Johns Manville's standard Terms and Conditions, which includes a Limited Warranty and Limitation of Remedy. For a copy of the Johns Manville standard Terms and Conditions or for information on other Johns Manville roofing products and systems, visit www.jm.com/terms-conditions.