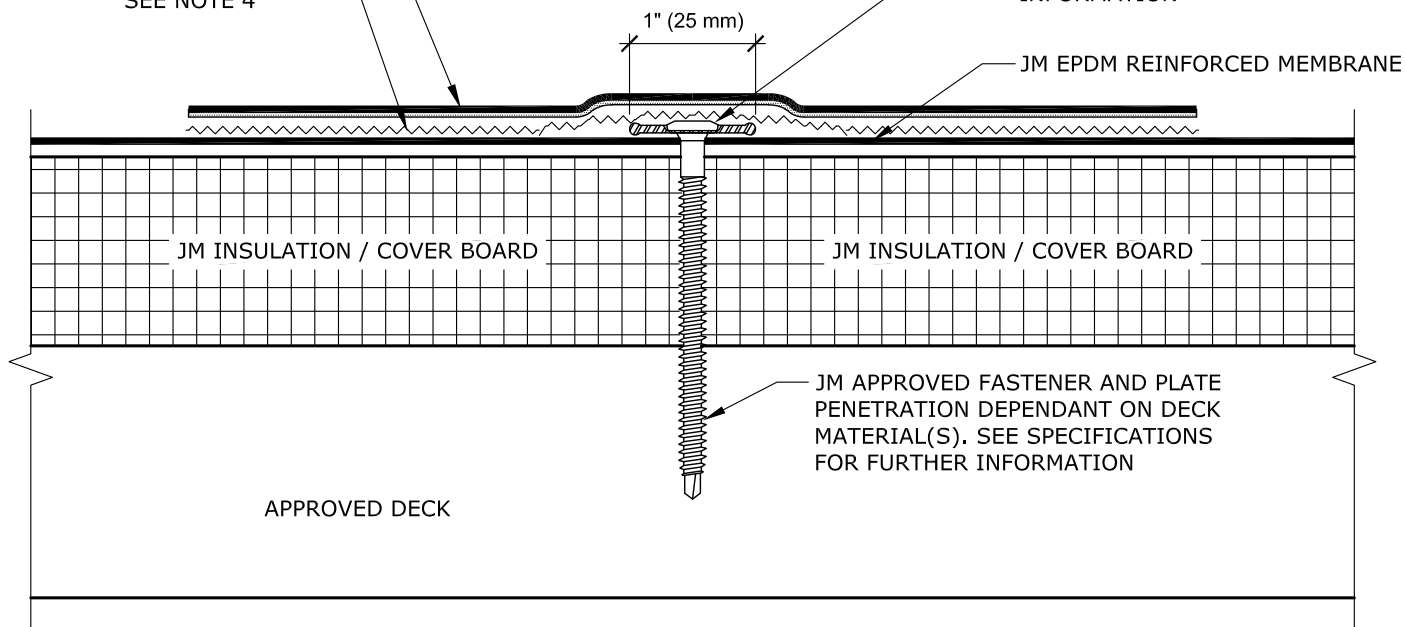


ISOMETRIC VIEW

JM APPROVED FASTENER AND GALVALUME-COATED STEEL ANCHOR BAR PENETRATION DEPENDANT ON DECK MATERIAL(S). SEE SPECIFICATIONS FOR FURTHER INFORMATION

JM 9" EPDM SEALING STRIP
JM EPDM TAPE PRIMER- SEE NOTE 4



JM APPROVED FASTENER AND PLATE PENETRATION DEPENDANT ON DECK MATERIAL(S). SEE SPECIFICATIONS FOR FURTHER INFORMATION

NOTES:

1. REFER TO JOHNS MANVILLE WEBSITE (www.jm.com) FOR THE MOST CURRENT INFORMATION.
2. REFER TO SINGLE PLY FLASHING SPECIFICATIONS FOR INSTALLATION INSTRUCTIONS AND REQUIREMENTS WHICH ARE PART OF THIS DETAIL.
3. ANY CARPENTRY, METAL WORK, OR MASONRY CONSTRUCTION SHOULD BE DESIGNED AND CONSTRUCTED IN ACCORDANCE WITH LOCAL CODE REQUIREMENTS AND/OR PROJECT SPECS. THESE COMPONENTS SHOULD BE REVIEWED AND APPROVED BY A LICENSED DESIGN PROFESSIONAL.
4. JM EPDM TAPE PRIMER OR JM SINGLE PLY MEMBRANE PRIMER (LOW VOC) MUST BE APPLIED ON ALL SURFACES COMING INTO CONTACT WITH JM EPDM PEEL & STICK PRODUCTS. ROLL MEMBRANE WITH HAND ROLLER UNDER PRESSURE AT SEAM.

DRAWING NO.

E-PT-10

PROTECTION

EPDM HURRICANE PEEL STOP ANCHOR BAR

MEMBRANE TYPE:
JM EPDM

MAXIMUM GUARANTEE TERM:
20 YEAR

SCALE
N.T.S

ISSUE DATE
08-25-20

Johns Manville is a manufacturer of commercial roofing products and offers this general conceptual information to you as a courtesy for general educational purposes only. This complimentary assistance is not to be either used or relied upon by anyone as a substitute for professional engineering design and documentation required by any building code, contract, or applicable law. By accepting the general conceptual information, you agree it does not constitute any representations, endorsements of, or an assumption by Johns Manville of any duty or liability for either the adequacy of the design of a building, any of its components or the sufficiency of any construction.

