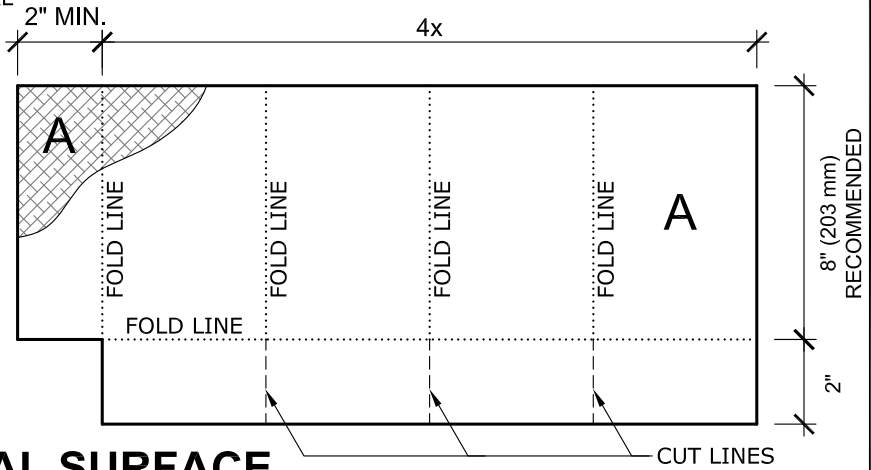


THOROUGHLY CLEAN STEEL AND APPLY SEAMFREE PMMA METAL PRIMER PRIOR TO INSTALLATION OF SEAMFREE PMMA MEMBRANE FLASHING

SEAMFREE PMMA SCRIM WRAPPED AROUND PENETRATION W/ MIN. 2" OVERLAP AT JOINT OVERLAP



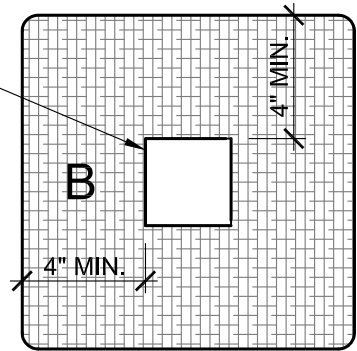
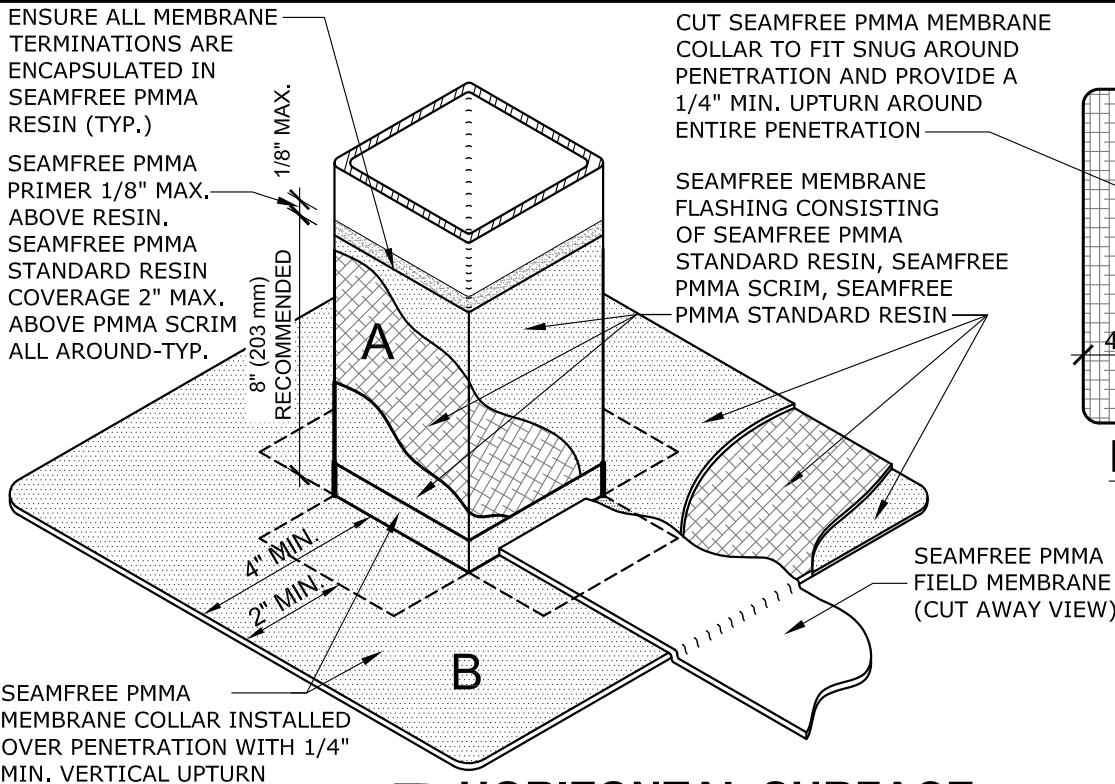
A VERTICAL SURFACE STEP A

ENSURE ALL MEMBRANE TERMINATIONS ARE ENCAPSULATED IN SEAMFREE PMMA RESIN (TYP.)

SEAMFREE PMMA PRIMER 1/8" MAX. ABOVE RESIN. SEAMFREE PMMA STANDARD RESIN COVERAGE 2" MAX. ABOVE PMMA SCRIM ALL AROUND-TYP.

CUT SEAMFREE PMMA MEMBRANE COLLAR TO FIT SNUG AROUND PENETRATION AND PROVIDE A 1/4" MIN. UPTURN AROUND ENTIRE PENETRATION

SEAMFREE MEMBRANE FLASHING CONSISTING OF SEAMFREE PMMA STANDARD RESIN, SEAMFREE PMMA SCRIM, SEAMFREE PMMA STANDARD RESIN



HALF SCALE

B HORIZONTAL SURFACE STEP B

NOTES:

1. REFER TO JOHNS MANVILLE WEBSITE (www.jm.com) FOR MOST UP-TO-DATE INFORMATION.
2. PLEASE SEE SEAMFREE PMMA FLASHING SPECIFICATIONS FOR A FULL DESCRIPTION OF INSTALLATION INSTRUCTIONS AND REQUIREMENTS WHICH ARE CONSIDERED A PART OF THIS DETAIL.
3. ANY CARPENTRY OR METAL WORK SHOULD BE DESIGNED AND CONSTRUCTED IN ACCORDANCE WITH LOCAL CODE REQUIREMENTS AND/OR PROJECT SPECIFICATIONS. THESE COMPONENTS SHOULD BE REVIEWED AND APPROVED BY A LICENSED DESIGN PROFESSIONAL.
4. SEAMFREE PMMA MEMBRANE FLASHING CONSISTS OF SEAMFREE PMMA FLASHING RESIN, SEAMFREE PMMA SCRIM, SEAMFREE PMMA FLASHING RESIN. USE THE APPROPRIATE SEAMFREE PMMA PRIMER DEPENDING ON TYPE OF SUBSTRATE.

DRAWING NO.

L-FP-03

DRAINS & VENTS

SQUARE TUBE PENETRATION FLASHING

MEMBRANE TYPE:
SEAMFREE PMMA

Johns Manville is a manufacturer of commercial roofing products and offers this general conceptual information to you as a courtesy for general educational purposes only. This complimentary assistance is not to be either used or relied upon by anyone as a substitute for professional engineering design and documentation required by any building code, contract, or applicable law. By accepting the general conceptual information, you agree it does not constitute any representations, endorsements of, or an assumption by Johns Manville of any duty or liability for either the adequacy of the design of a building, any of its components or the sufficiency of any construction.

SCALE
N.T.S

ISSUE DATE
04-10-24

MAXIMUM GUARANTEE TERM:
20 YEAR

