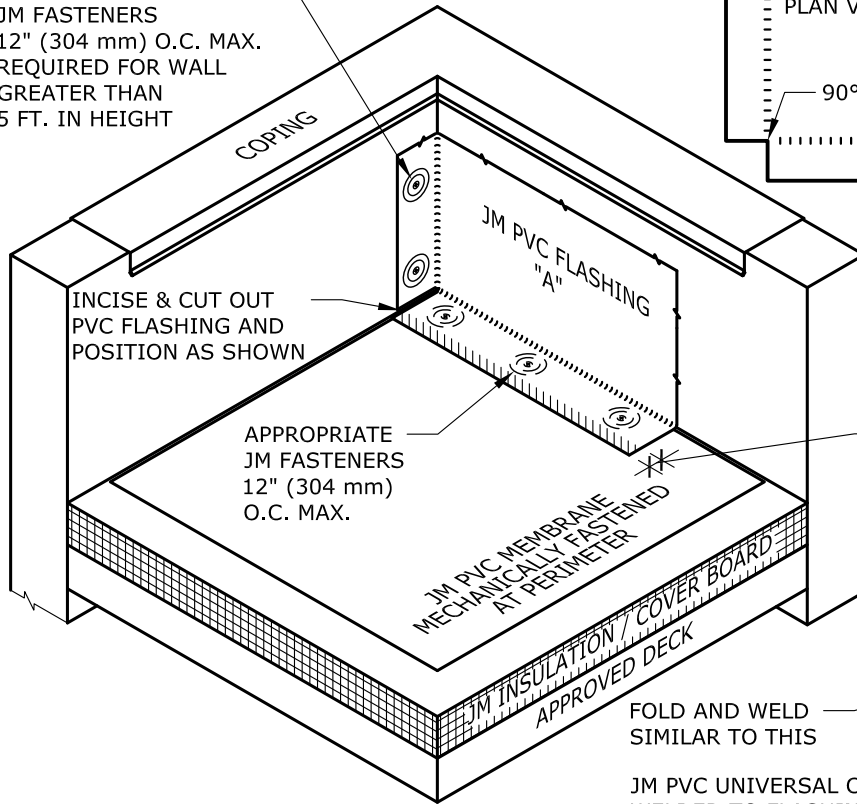
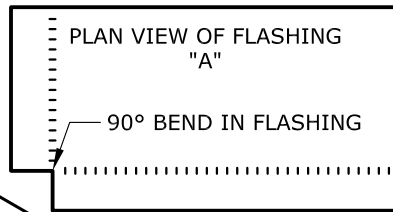


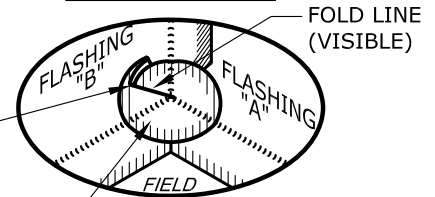
APPROPRIATE VERTICAL JM FASTENERS 12" (304 mm) O.C. MAX. REQUIRED FOR WALL GREATER THAN 5 FT. IN HEIGHT

STEP 1



1 1/2" (40 mm) MINIMUM CONTINUOUS WELD

STEP 3
AT INSIDE CORNER

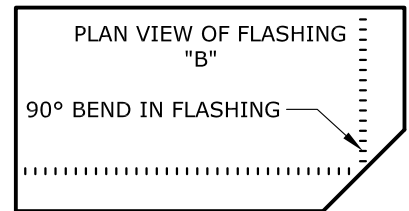
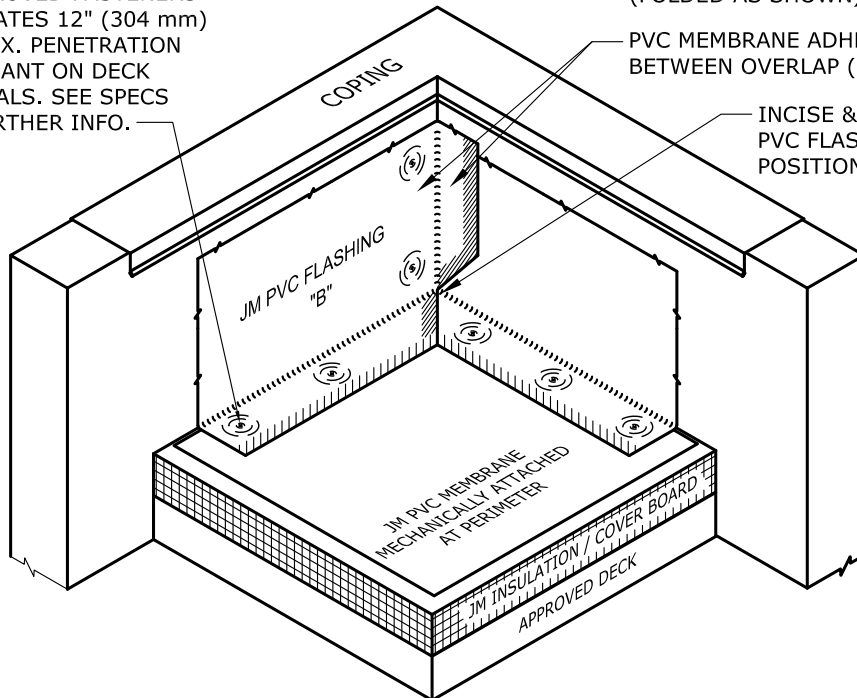


FOLD AND WELD SIMILAR TO THIS

JM PVC UNIVERSAL CORNER WELDED TO FLASHING SHEET (FOLDED AS SHOWN)

STEP 2

JM APPROVED FASTENERS AND PLATES 12" (304 mm) O.C. MAX. PENETRATION DEPENDANT ON DECK MATERIALS. SEE SPECS FOR FURTHER INFO.



NOTES:

1. REFER TO JOHNS MANVILLE WEBSITE (www.jm.com) FOR MOST UP-TO-DATE INFORMATION.
2. PLEASE SEE SINGLE PLY FLASHING SPECIFICATIONS FOR A FULL DESCRIPTION OF INSTALLATION INSTRUCTIONS AND REQUIREMENTS WHICH ARE CONSIDERED A PART OF THIS DETAIL.
3. ANY CARPENTRY OR METAL WORK SHOULD BE DESIGNED AND CONSTRUCTED IN ACCORDANCE WITH LOCAL CODE REQUIREMENTS AND/OR PROJECT SPECIFICATIONS. THESE COMPONENTS SHOULD BE REVIEWED AND APPROVED BY A LICENSED DESIGN PROFESSIONAL.
4. JM PVC EDGE SEALANT IS OPTIONAL ON CUT OR NON ENCAPSULATED EDGES OF PVC REINFORCED MEMBRANE. THIS INCLUDES FACTORY CUT MEMBRANE.

DRAWING NO.

P-FC-04

CURB & CORNER

INSIDE CORNER

MEMBRANE TYPE:
JM PVC

MAXIMUM GUARANTEE TERM:
30 YEAR

SCALE: N.T.S.
ISSUE DATE: 08-07-19

Johns Manville is a manufacturer of commercial roofing products and offers this general conceptual information to you as a courtesy. This complimentary assistance is not to be used or relied upon by anyone as a substitute for professional engineering design and documentation required by building code, contract, or applicable law. By accepting these comments you agree they do not constitute any representations, endorsements of, or an assumption by Johns Manville of any liability for either the adequacy of the design of this building or any other material not supplied by Johns Manville.

