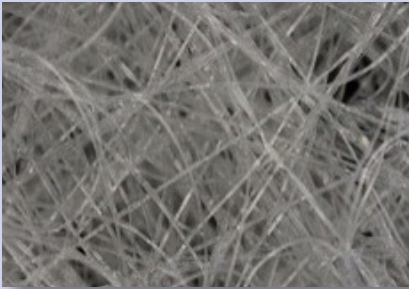


Membrane Reinforcements

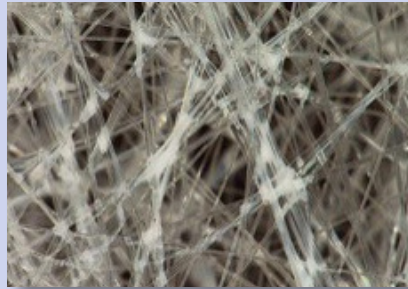
SBS Products can be designed to meet 3 main ASTM specifications that are defined by product reinforcement. All 3 ASTMs use test methods from ASTM D5147 to allow for comparisons of tensile, tear, elongation, dimensional stability, and other physical properties.

POLYSTER



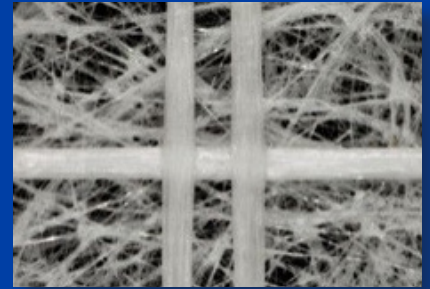
ASTM D6164

GLASS



ASTM D6163

COMPOSITE Polyester & Glass Fiber



ASTM D6162

D6162 products allow customization from manufacturers because of the variety of ways the reinforcement can be designed.

Design for complete system performance.

Comparing Type III Physical Properties by ASTM

Physical Property	D6163 Type III Minimums	D6162 Type III Minimums	Meets or Exceeds D6163 Type III Requirements
Thickness	120 mils	135 mils	✓
Peak Tensile Load	0°F - 180 lbf 73°F - 150 lbf	0°F - 250 lbf 73°F - 250 lbf	✓
Elongation at Peak Load	2%	2%	✓
Ultimate Elongation	2%	3%	✓
Tear Strength	210 lbf	280 lbf	✓
Dimensional Stability	0.5%	0.5%	✓

JM offers several SBS Membranes that meet or exceed D6162 Type III requirements.

Base Sheets

DynaMax™ FR Smooth
DynaMax™ FR S HW
DynaMax™ FR Smooth Plus

Cap Sheets

DynaMax™ FR
DynaMax™ FR HW
DynaMax™ FR CR G

DynaMax™ FR HW CR G
DynaMax™ FR Plus