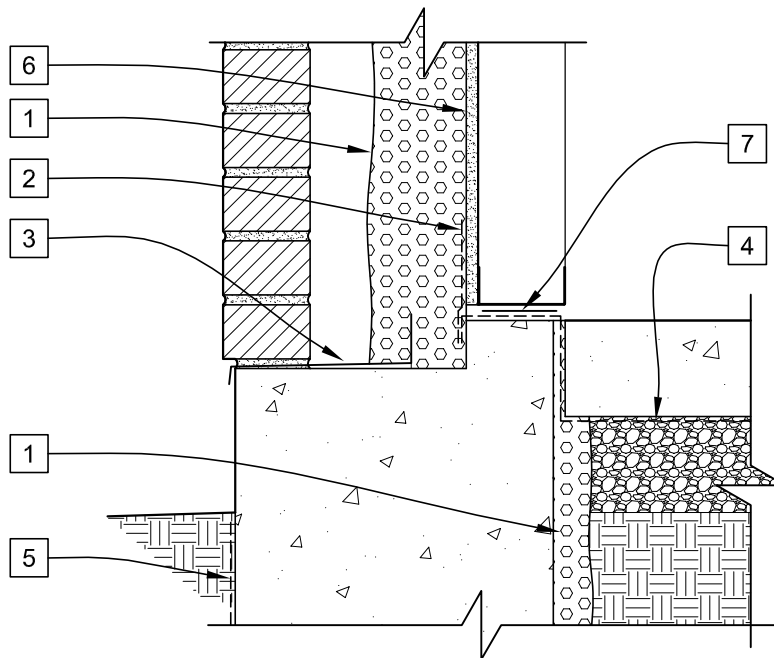


LEGEND

- 1 JM CORBOND III™
- 2 AIR BARRIER MEMBRANE FULLY ADHERED TO WALL.
- 3 THROUGH-WALL FLASHING INTERFACED W/ AIR BARRIER TO PROVIDE A SHINGLE AFFECT.
- 4 TYPE 1 VAPOR BARRIER.
- 5 MOISTURE BARRIER UP TO LEVEL OF GRADE.
- 6 EXTERIOR GYPSUM SHEATHING.
- 7 FOAM GASKET



FLOOR SLAB TO FOUNDATION WALL

SKETCH NO.

AB1

SCALE
1 1/2"=1'-0"

ISSUE DATE
01/20/11

REV. NO.

CAD FILE:
FLOOR SLAB TO FOUNDATION.dwg

Johns Manville and Corbond Corporation (together, "JM") Manufacture spray polyurethane foam insulation products and offer this general conceptual information to you as a courtesy. This complimentary assistance is not to be used or relied upon by anyone as a substitute for professional engineering design and documentation required by building code, contract, or applicable law. By accepting these comments you agree they do not constitute any representations, endorsements of, or an assumption by JM of any liability for either the adequacy of the design of this building or any other material not supplied by JM.

