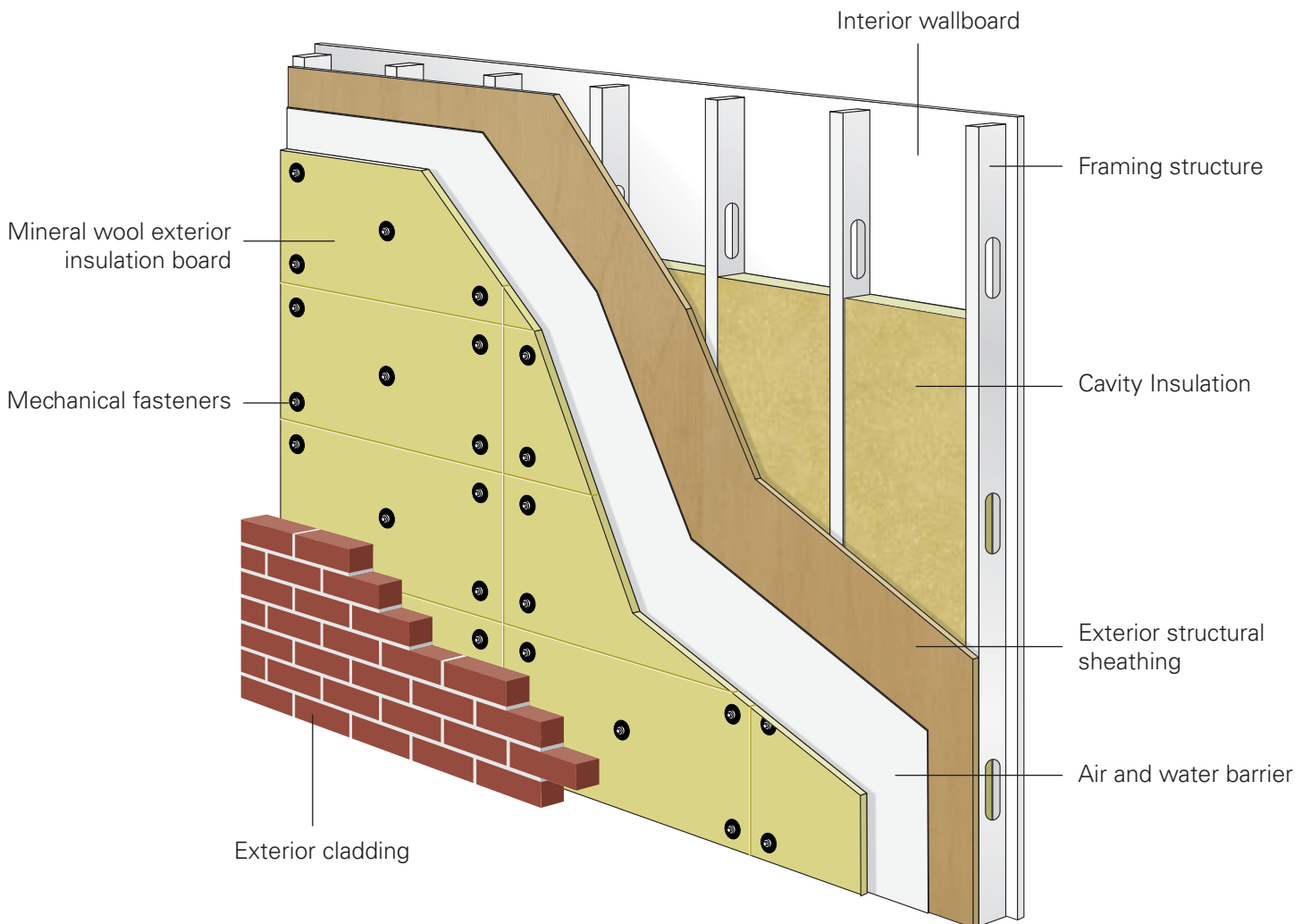


JM CladStone® Water & Fire Block mineral wool insulation provides a vapor-permeable continuous layer of insulation. Along with its fire-resistant capabilities, JM CladStone Water & Fire Block will repel water, which allows for its use in rain screen applications. JM CladStone Water & Fire Block mineral wool insulation can be used in Type I-V construction behind a variety of cladding systems including brick, and concrete, and can be mechanically fastened to wood, steel, and concrete substrates.

## Typical Assembly Overview

1. Interior wallboard and framing structure
2. Cavity Insulation
3. Exterior structural sheathing (gypsum, wood, or other approved material)
4. Air and water barrier
5. Mineral wool exterior insulation board installed using mechanical fasteners
6. Exterior cladding



## Recommended Components

- Cavity insulation: fiberglass batt (JM Formaldehyde-free™ fiberglass batts: unfaced, faced or ComfortTherm®); spray-in fiberglass (JM Climate Pro® blown-in fiberglass, JM Spider® Custom Insulation System), spray polyurethane foam (JM Corbond®); mineral wool (JM MinWool®).
- Mechanical fasteners such as screws & washers, insulation fasteners, plastic cap nails, stick/impaling pins or other proprietary fasteners. The cladding system will also provide additional support to hold the insulation in place.
- Adhesive for temporary securement.

## Safety Equipment Recommendations

- Loose-fit long-sleeved shirt and long-legged pants
- Gloves
- Safety glasses with side shields

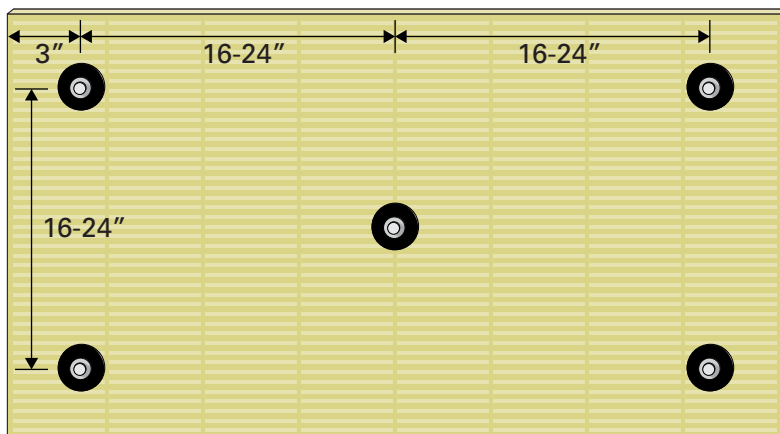
## Installation Procedure

Installation recommendations and procedures can change based on the mechanical fastening requirements of the exterior cladding system or the design of the building structure. Below are general installation guidelines.

### Installation to Exterior Sheathing

JM CladStone Water & Fire Block insulation is installed on top of the air and water barrier. Boards should be butted together with no gaps or voids. If necessary, install stick pins or impaling pins to hold the insulation in place prior to mechanically fastening the insulation to the substrate.

JM CladStone Water & Fire Block may be installed with a variety of mechanical fasteners. Fasteners should be appropriate for the type of substrate, capable of withstanding all applied loads, and suitable for use outside in an exterior application. Mechanical fasteners should be spaced no more than 24" apart and should be installed in a manner as to not overly compress the insulation. The fasteners should be placed no less than 3" from the board edges and should penetrate 1½" into the exterior sheathing. Use a sufficient amount of fasteners to hold the insulation in place without having the product pillow, sag, or tear under expected conditions. Refer to the recommended components section for appropriate mechanical fasteners.



If this fastener pattern does not work for your application, please ensure that you are using 1 fastener for every 1.33 ft<sup>2</sup> of board (6 fasteners for a standard 24" x 48" board). However, please use the same rules of 16" to 24" spacing between fasteners and each fastener should be no less than 3" from the edge of the board whenever possible.

**Fastener length = thickness + 1.5"**

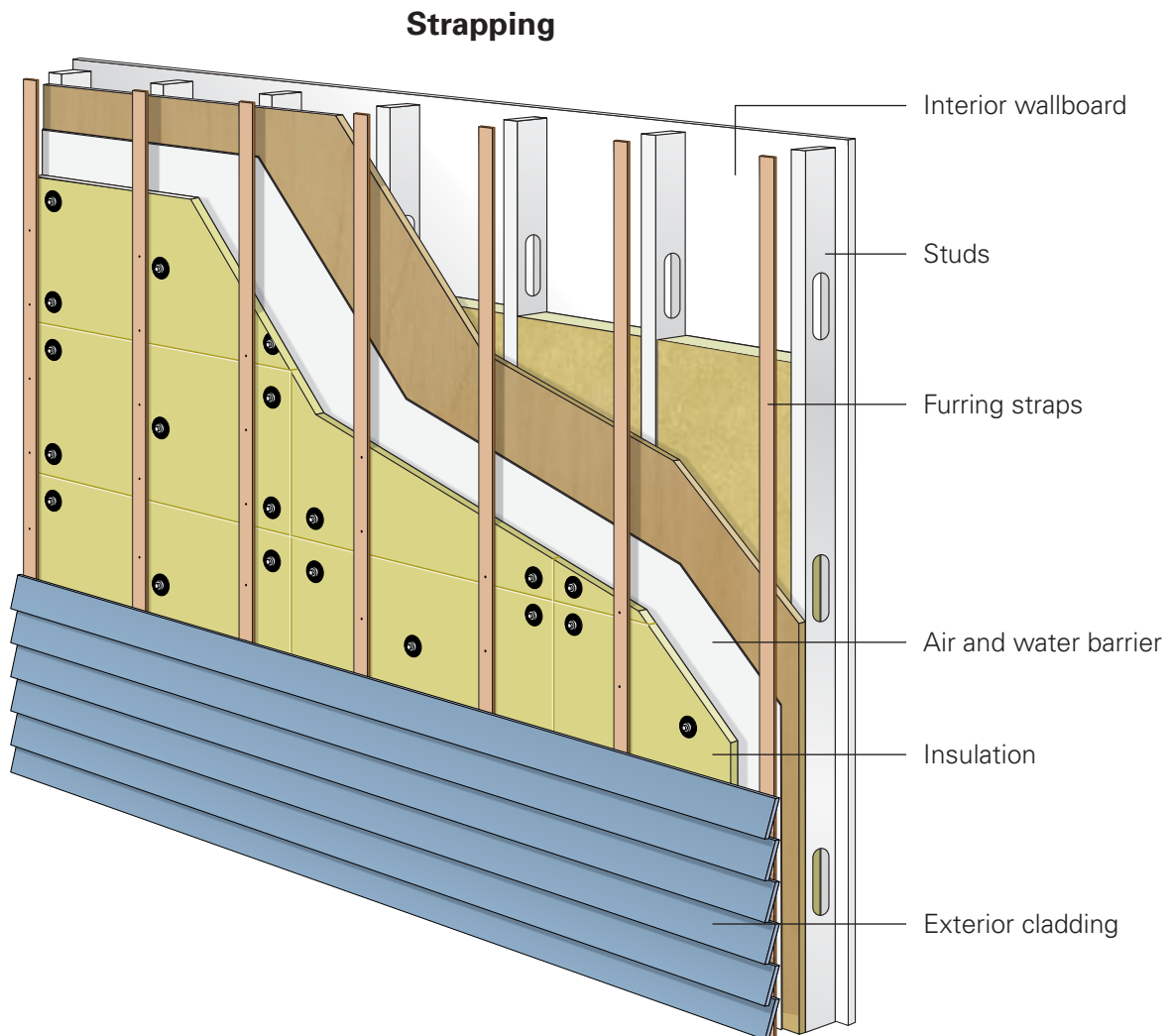
## Installation with Exterior Cladding Attachment Systems

JM CladStone Water & Fire Block mineral wool insulation is compatible with many types of exterior cladding attachment systems including strapping (wood furring), vertical or horizontal girts, and metal bracket and girt systems. Some common installation procedures are outlined below.

1. Measure spacing to mechanically fasten the cladding attachment system to the studs.  
This spacing can differ based on the requirements of the exterior cladding, or based on the recommendations of the structural engineer.
2. Install insulation to the exterior sheathing using mechanical fasteners.
3. Install exterior cladding per manufacturer's guidelines as soon as possible. If the insulation will be exposed to the elements prior to the exterior cladding installation, protect it with a waterproof tarpaulin.

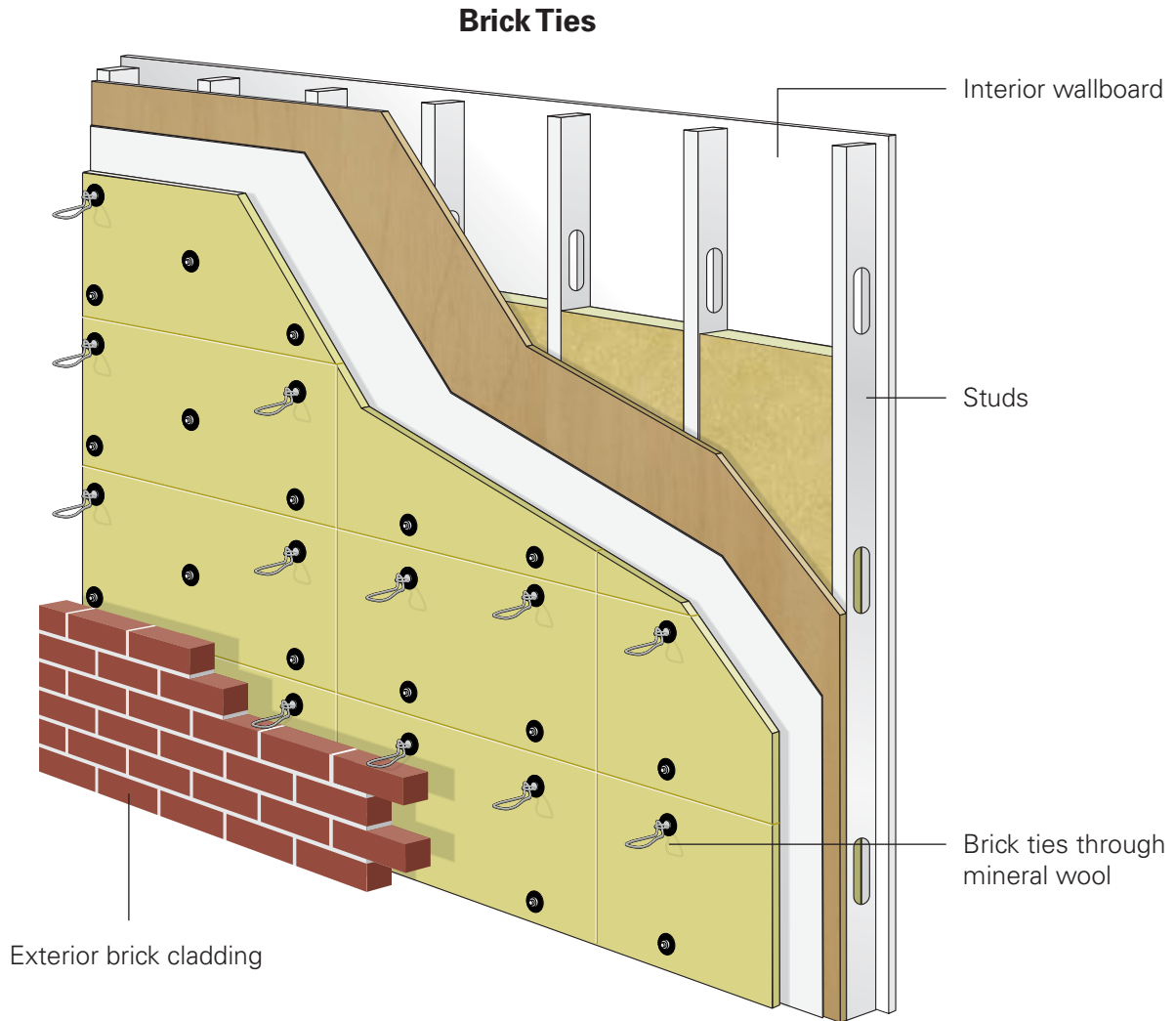
### Strapping

If strapping is used to mechanically attach the exterior cladding, install the mineral wool to the sheathing first, then install the straps and exterior cladding.



## Brick Ties

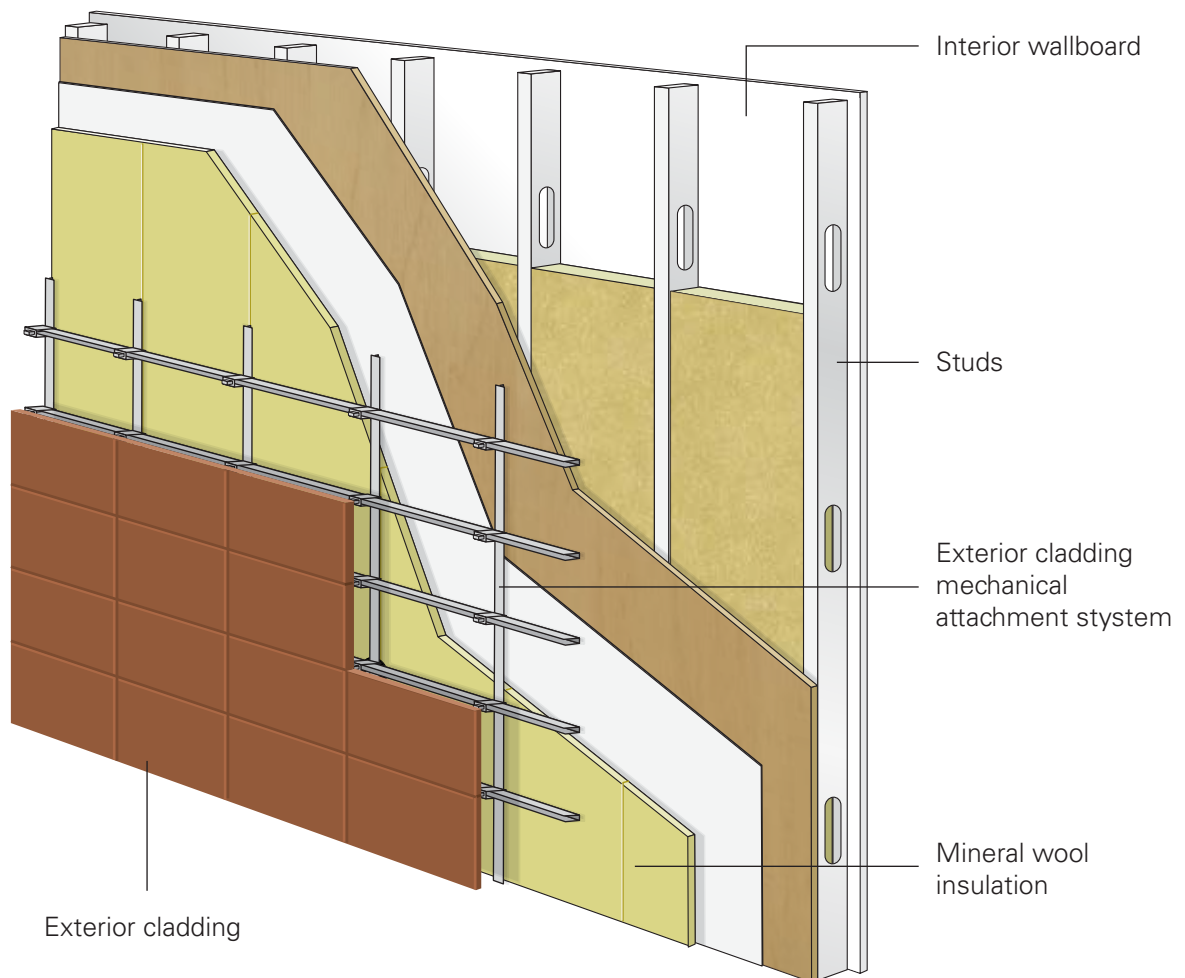
When brick is used as the exterior cladding, first install the brick ties per manufacturer's recommendations. Then, install the mineral wool insulation by either putting a hole in the insulation for the brick ties, or fit the insulation around the brick ties. Add additional fasteners as needed.



## Mechanical Attachment Systems

In some cases, the exterior cladding will require a mechanical attachment system. The mineral wool should be installed per the cladding system manufacturer's recommendations for continuous insulation.

### Mechanical Attachment System



## Storage Recommendations

- Store JM CladStone Water & Fire Block elevated above the floor, ground, and/or standing water.
- If stored outdoors, cover completely with a waterproof tarpaulin.
- For indoor and outdoor storage, adhere to all local building and fire codes including NFPA 230 and NFPA 13.