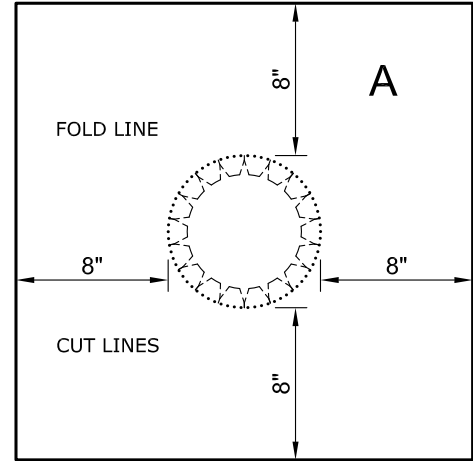
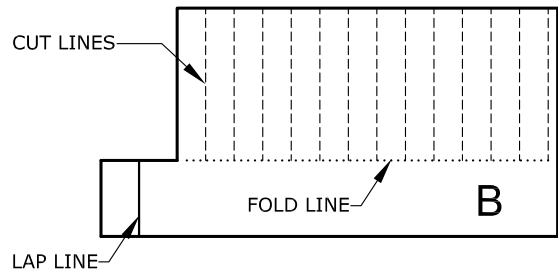
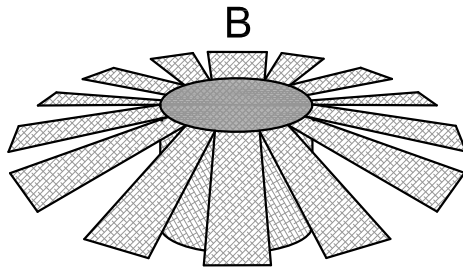


A 2-PIECE "A" SHEET MAY BE NECESSARY FOR STEEP SUMPS. DRY FIT SCRIM TO DETERMINE CONFIGURATION.



### A TARGET PATCH STEP A



### B DRAIN INSERT STEP B



**NOTES:**

- A. USE SCRIM DETAIL IN CONJUNCTION WITH THE PERMAFLASH LAYOUT DRAWING, PMF-5.
- B. EMBED ALL PRE-CUT SCRIM INTO A FULL WET BASE COAT OF MBR FLASHING CEMENT OR **1-PART PERMAFLASH®**. ALLOW EACH COAT TO FULLY CURE BEFORE APPLICATION OF SUBSEQUENT COATS.
- C. ENCAPSULATE ALL SCRIM COMPLETELY WITH A MINIMUM OF A 60 MIL COVERING.
- D. ALL FOLD LINES REPRESENTED AS .....  
ALL CUT LINES REPRESENTED AS - - - - -
- E. JM ONE-PART PERMAFLASH 20 YEAR MAXIMUM GUARANTEE TERM AND TWO-PART JM PERMAFLASH 30 YEAR MAXIMUM GUARANTEE TERM.

DRAWING NO.

**PMF-5S**

DRAINS & VENTS

## JM PERMAFLASH DRAIN SCRIM DETAIL

MEMBRANE TYPE:  
JM PERMAFLASH

Johns Manville is a manufacturer of commercial roofing products and offers this general conceptual information to you as a courtesy for general educational purposes only. This complimentary assistance is not to be either used or relied upon by anyone as a substitute for professional engineering design and documentation required by any building code, contract, or applicable law. By accepting the general conceptual information, you agree it does not constitute any representations, endorsements of, or an assumption by Johns Manville of any duty or liability for either the adequacy of the design of a building, any of its components or the sufficiency of any construction.

SCALE  
N.T.S

ISSUE DATE  
04-10-24

MAXIMUM GUARANTEE TERM:  
20 YEAR / 30 YEAR

