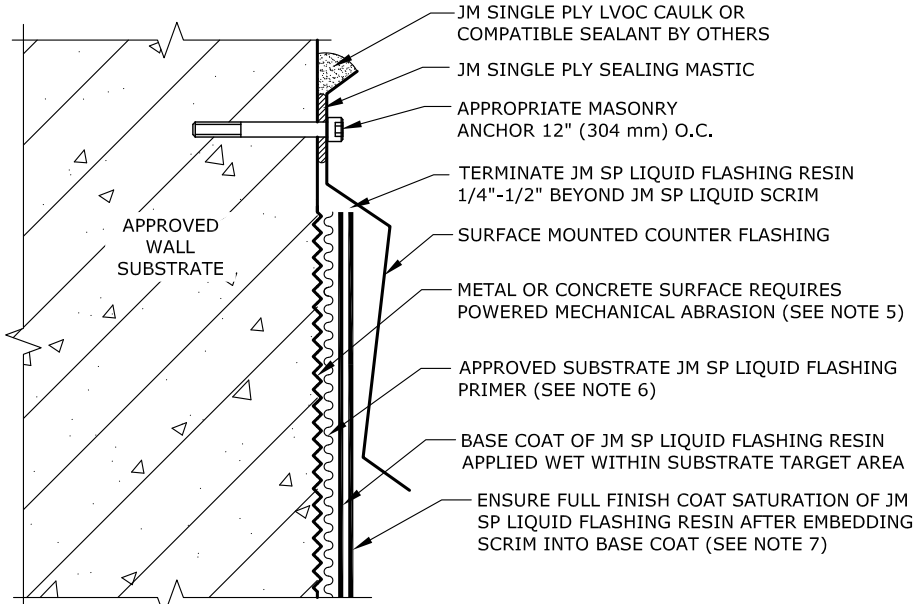
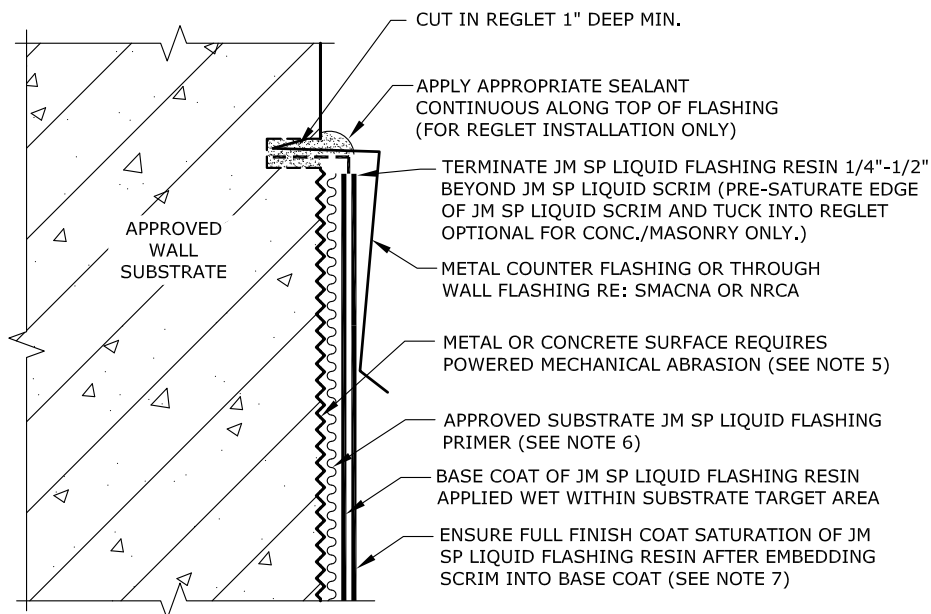


STANDARD OPTION




SURFACE MOUNTED COUNTER FLASHING

- NOTES:**
1. REFER TO JOHNS MANVILLE WEBSITE (www.jm.com) FOR MOST UP-TO-DATE INFORMATION.
 2. PLEASE SEE JM SINGLE PLY LIQUID FLASHING SPECIFICATIONS FOR A FULL DESCRIPTION OF INSTALLATION INSTRUCTIONS AND REQUIREMENTS WHICH ARE CONSIDERED A PART OF THIS DETAIL.
 3. ANY CARPENTRY OR METAL WORK SHOULD BE DESIGNED AND CONSTRUCTED IN ACCORDANCE WITH LOCAL CODE REQUIREMENTS AND/OR PROJECT SPECIFICATIONS. THESE COMPONENTS SHOULD BE REVIEWED AND APPROVED BY A LICENSED DESIGN PROFESSIONAL.
 4. ALL SEALANTS / CAULKING SHALL BE PERIODICALLY INSPECTED AND MAINTAINED BY THE BUILDING OWNER THROUGHOUT THE LIFE OF THE ROOF.
 5. ALL METAL SURFACES REQUIRE POWERED MECHANICAL ABRASION TO BRING METAL DOWN TO A VIRGIN SURFACE. WIRE BRUSH IS NOT AN ACCEPTABLE ALTERNATIVE. CONCRETE AND MASONRY SURFACES REQUIRE POWERED GRINDER WITH ABRASIVE WHEEL FOLLOWED BY VACUUM AND/OR POWER WASH.
 6. METAL AND WOOD SUBSTRATE REQUIRES JM SP LIQUID FLASHING METAL & WOOD PRIMER. CONCRETE OR MASONRY SUBSTRATE REQUIRES JM SP LIQUID FLASHING CONCRETE PRIMER PRIOR TO JM SP LIQUID FLASHING RESIN APPLICATION.
 7. SECOND TOP COAT JM SP LIQUID RESIN ON VERTICAL SURFACES RECOMMENDED 24 HOURS AFTER INITIAL APPLICATION.
 8. JM SP LIQUID FLASHING RESIN CONSISTS OF A BASE COAT OF JM SP LIQUID FLASHING RESIN, A JM SP LIQUID SCRIM AND A FINAL COAT OF JM SP LIQUID FLASHING RESIN. USE THE APPROPRIATE JM SP FLASHING PRIMER DEPENDING ON TYPE OF SUBSTRATE.



REGLET WITH COUNTER FLASHING

DRAWING NO.		FLASHING WALL OPTIONAL TERMINATIONS		
SPL-FW-05				
MEMBRANE ASSEMBLY		MEMBRANE TYPE:		<small>Johns Manville is a manufacturer of commercial roofing products and offers this general conceptual information to you as a courtesy for general educational purposes only. This complimentary assistance is not to be either used or relied upon by anyone as a substitute for professional engineering design and documentation required by any building code, contract, or applicable law. By accepting the general conceptual information, you agree it does not constitute any representations, endorsements of, or an assumption by Johns Manville of any duty or liability for either the adequacy of the design of a building, any of its components or the sufficiency of any construction.</small>
		JM SP LIQUID		
SCALE	ISSUE DATE	MAXIMUM GUARANTEE TERM:		
N.T.S	04-08-24	N/A		