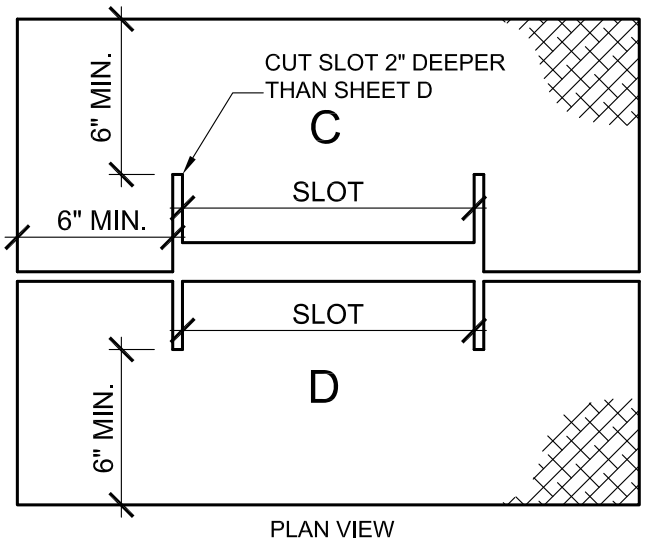
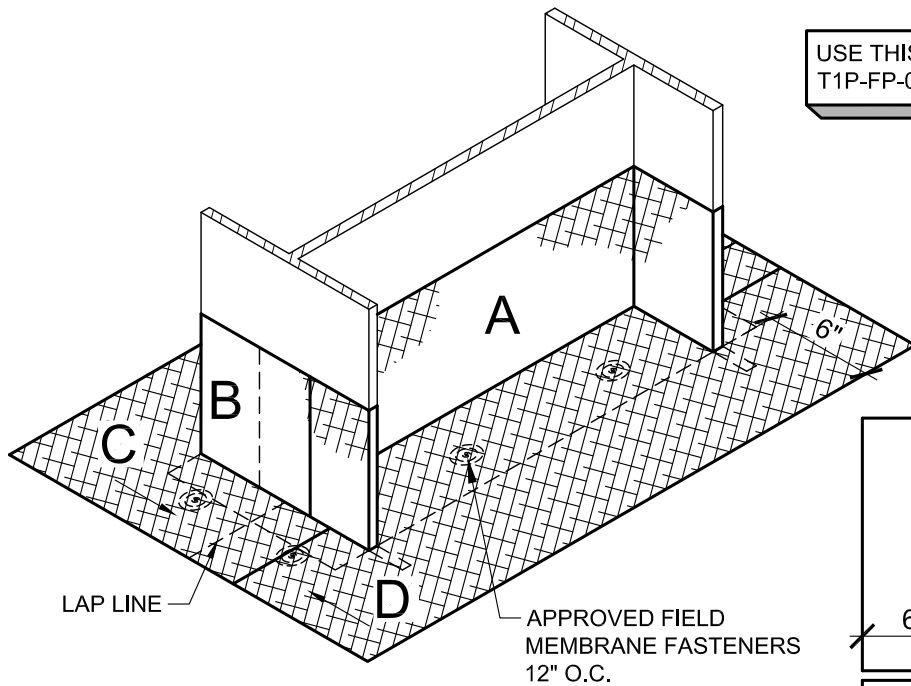


**VERTICAL SURFACES**  
**STEPS A & B**

USE THIS DETAIL IN CONJUNCTION WITH DETAIL T1P-FP-03 WHICH IS PART OF THIS INSTALLATION.



**HORIZONTAL SURFACES**  
**STEPS C & D**

**NOTES:**

- 1. ALL FOLD LINES SHOWN AS: .....  
 ALL CUT LINES SHOWN AS: - - - -

DRAWING NO.

**T1P-FP-04**

**WIDE FLANGE FLASHING SCRIM LAYOUT**  
**JM ONE-PART POURABLE SEALER LIQUID FLASHING**

PENETRATION

MEMBRANE TYPE:  
**TPO/ONE-PART POURABLE SEALER**

Johns Manville is a manufacturer of commercial roofing products and offers this general conceptual information to you as a courtesy for general educational purposes only. This complimentary assistance is not to be either used or relied upon by anyone as a substitute for professional engineering design and documentation required by any building code, contract, or applicable law. By accepting the general conceptual information, you agree it does not constitute any representations, endorsements of, or an assumption by Johns Manville of any duty or liability for either the adequacy of the design of a building, any of its components or the sufficiency of any construction.

SCALE  
 N.T.S

ISSUE DATE  
 04-09-24

MAXIMUM GUARANTEE TERM:  
 20 YEAR

DRAWN BY:  
 HJV

