



SINGLE PLY

PRODUCT REFERENCE GUIDE

TABLE OF CONTENTS

PVC

MEMBRANES

JM PVC	
JM PVC FB	
JM PVC mil/MIN	5

JM PVC SD Plus	
JM PVC SD Plus MIN	6

ACCESSORIES GENERAL

JM PVC Detail Membrane	
JM PVC Detail Strip	
JM PVC T-Joint Patch	
JM PVC Universal Corner	
JM PVC Penetration Pan	7

ACCESSORIES PIPE BOOTS

JM PVC Pipe Boot	
JM PVC Square Pipe Boot	
JM PVC Split Pipe Boot	8

ACCESSORIES SAFETY

JM PVC Safety Strip	
JM PVC Walkpad	
JM PVC Heavy Duty Walkpad	9

ACCESSORIES COATED METAL

JM PVC Coated Metal	10
---------------------	-----------

ACCESSORIES MISCELLANEOUS

JM PVC Polyester Mat Protection Slipsheet	
JM PVC Profiles	11

TPO

MEMBRANES

JM TPO Roofing Membrane	13
-------------------------	-----------

JM TPO Fleece Backed Roofing Membrane	
JM TPO Roofing Membrane MIN	
JM TPO Self-Adhered Roofing Membrane	
JM TPO Self-Adhered Flashing Membrane	14

ACCESSORIES GENERAL

JM TPO Detail Membrane	
JM TPO T-Joint Patch	
JM TPO Universal Corner	
JM TPO Curb Flashing	
JM TPO Penetration Pocket	
JM TPO Reinforced Cover Strip	15

ACCESSORIES PEEL & STICK

JM TPO Cover Tape	
JM TPO Peel and Stick Reinforced Termination Strip (RTS)	
JM TPO Peel and Stick Reinforced Perimeter Strips (RPS)	
JM White EPDM Peel & Stick Flashing	
JM White EPDM Peel & Stick Inside/Outside Corners	16

ACCESSORIES PIPE BOOTS

JM TPO Pipe Boot (Peel and Stick)	
JM TPO Pipe Boot	
JM TPO Split Pipe Boot	
TPO Square Pipe Boot	17

ACCESSORIES SAFETY

JM TPO Walkpad	
JM TPO Safety Walkpad	
JM Single Ply Safety Strip	18

ACCESSORIES COATED METAL

JM TPO Coated Metal	19
---------------------	-----------

ACCESSORIES MISCELLANEOUS

JM 3oz Polyester Mat Protection Slipsheet	20
---	-----------

EPDM

MEMBRANES

JM EPDM NR	
JM EPDM R	22

JM EPDM NR FIT Systems	
JM EPDM R FIT Systems	23

ACCESSORIES GENERAL

JM EPDM Reinforced Perimeter Strip	
JM EPDM Pre-Taped Curb Flashing	
JM EPDM Seam Tape Plus	24

ACCESSORIES BALLAST MATS

JM EPDM Protective Stone Mat	
JM 3oz Polyester Slipsheet	25

ACCESSORIES PEEL & STICK

JM EPDM Peel and Stick Flashing	
JM EPDM Peel and Stick Sealing Strip	
JM EPDM Reinforced Termination Strip with Tape	
JM EPDM Peel and Stick Walkpad	
JM EPDM Peel and Stick Inside/Outside Corner	
JM EPDM Peel and Stick Pipe Boot	26

JM EPDM Peel and Stick T-Joint Patch	
JM EPDM Peel and Stick Pourable Sealer Pocket	27

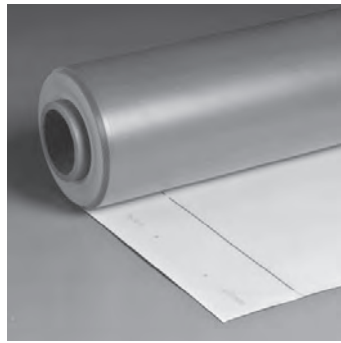
TABLE OF CONTENTS

<h2>ISO & COVER BOARDS</h2> <p>POLYISOCYANURATE ENRGY 3® [Flat] 29</p> <p>ENRGY 3® [Tapered] 30</p> <p>ROOF BOARDS GYPSUM-FIBER SECUROCK® Gypsum-Fiber Roof Board 31</p> <p>ROOF BOARDS PRIMED DensDeck® Prime Roof Board DensDeck® StormX™ Prime Roof Board DEXcell FA Glass-Mat Roof Board 32</p> <p>ROOF BOARDS GLASS-FACED DensDeck® Roof Board DEXcell® Glass-Mat Roof Board DEXcell® FA VSH Glass-Mat Roof Board SECUROCK® Ultralight Glass-Mat Roof Board 33</p> <p>ROOF BOARDS CEMENT DEXcell® Cement Roof Board SECUROCK® Cement Roof Board 34</p> <p>COVER BOARDS HIGH DENSITY RetroPlus™ Roof Board ProtectoR® HD 35</p> <p>COVER BOARDS POLYISO SeparatoR® SeparatoR® CGF 36</p> <p>VAPOR BARRIERS JM Vapor Barrier SA JM Vapor Barrier SAR 37</p>	<h2>FASTENERS & PLATES</h2> <p>INSULATION UltraFast® Fasteners UltraFast® Plates UltraFast® AccuTrac™ Plates 39</p> <p>Nail-Lok™ SD Nail-Lok™ WD Lite Deck Fasteners 40</p> <p>MEMBRANE High Load Fasteners High Load Plates High Load AccuSeam™ Plates 41</p> <p>Extra High Load Fasteners Extra High Load Plates APB Plates 42</p> <p>MULTI-PURPOSE JM PVC RhinoPlate® JM PVC TreadSafe RhinoPlate® JM TPO RhinoPlate® JM TPO TreadSafe RhinoPlate® 43</p> <p>All-Purpose Fasteners Polymer Auger Fasteners 44</p> <p>Structural Concrete Deck Fasteners JM RetroDriller Fasteners 45</p>	<h2>CLEANERS ADHESIVES PRIMERS SEALANTS</h2> <p>CLEANERS JM TPO Membrane Cleaner JM Single Ply Membrane Cleaner [Low VOC] JM Weathered Membrane Cleaner 47</p> <p>PRIMERS JM Single Ply Membrane Primer [Low VOC] JM TPO Membrane Primer JM EPDM Tape Primer Plus JM EPDM Tape Primer Plus [Low VOC] 48</p> <p>ADHESIVES SPRAYABLE JM All Season Sprayable Bonding Adhesive JM PVC All Season Sprayable Bonding Adhesive JM Sprayable Bonding Adhesive Flush [LVOC] JM All Season Sprayable Bonding Adhesive Accessories 49</p> <p>ADHESIVES JM Membrane Bonding Adhesive JM LVOC Membrane Adhesive JM TPO Water Based Membrane Adhesive JM EPDM Water Based Membrane Adhesive JM PVC Membrane Adhesive JM PVC Water Based Membrane Adhesive 50</p> <p>JM Roofing System Urethane Adhesive JM Two-Part Urethane Insulation Adhesive JM Two-Part Urethane Insulation Adhesive Canister JM One-Step Foamable Adhesive 51</p> <p>SEALANTS JM TPO Pourable Sealer JM One-Part Pourable Sealer JM Single Ply LVOC Caulk JM Single Ply Sealing Mastic JM TPO LVOC Edge Sealant JM EPDM/PVC Pourable Sealer 52</p> <p>JM PVC Edge Sealant 53</p>
---	---	---



PVC

polyvinyl chloride Built to withstand the test of time, our PVC roofing membranes are made to resist the toughest weather conditions and chemicals. JM PVC with Dow Elvaloy® KEE and JM PVC SD Plus thermoplastic roofing membranes are manufactured using an ultraviolet-resistant polyvinyl chloride. Utilizing a polyester fabric reinforcement allows for systems to be both mechanically attached and adhered. PVC membranes deliver a pliable and durable sheet with excellent weathering characteristics and resistance to harsh chemicals and industrial pollutants.



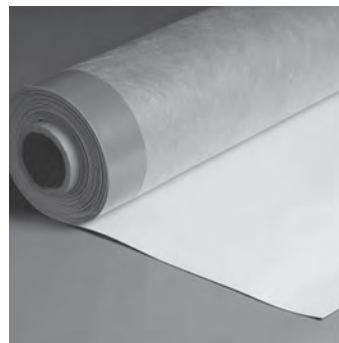
Component
M
Membrane
Single Ply

JM PVC

with Dow™ Elvaloy® KEE Polymer

JM PVC with the optimal amount of Dow™ Elvaloy® KEE is a heat-weldable polyvinyl chloride thermoplastic membrane that provides superior resistance against oil, fuels and other hard chemicals.

	SIZE	COLOR	SKU
50 MIL	39" × 100'	White	70000363
	60" × 100'	White	70000362
	78" × 100'	White	70000360
	120" × 100'	White	70000361
60 MIL	39" × 100'	White	70000371
	60" × 100'	White	70000373
	78" × 100'	White	70000377
	120" × 100'	White	70000370
	144" × 100'	White	70003843
	60" × 100'	Grey	70000721
	78" × 100'	Grey	70000378
	120" × 100'	Grey	70000718
	60" × 100'	Sandstone	70000716
	78" × 100'	Sandstone	70000379
120" × 100'	Sandstone	70000719	
80 MIL	39" × 75'	White	70000384
	60" × 75'	White	70000374
	78" × 75'	White	70000382
	120" × 75'	White	70000383
	78" × 75'	Grey	70000388
	120" × 75'	Grey	70000711
	78" × 75'	Sandstone	70000700
	120" × 75'	Sandstone	70000713



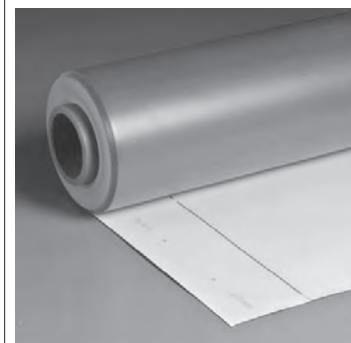
Component
M
Membrane
Single Ply

JM PVC FB

with Dow™ Elvaloy® KEE Polymer

JM PVC with KEE FB is a heat-weldable thermoplastic membrane that utilizes a Spunbond 3.8 oz. fleece creating an extremely durable, strong yet light and flexible protection layer.

	SIZE	COLOR	SKU
60 MIL	76" × 90'	White	70000735
	144" × 90'	White	70000712
	76" × 90'	Grey	70000208
	76" × 90'	Sandstone	70000570
80 MIL	76" × 75'	White	70000386
	144" × 75'	White	70000739



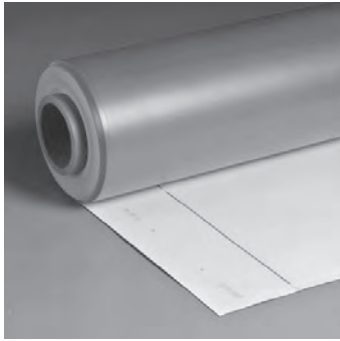
Component
M
Membrane
Single Ply

JM PVC mil/MIN

with Dow™ Elvaloy® KEE Polymer

JM PVC with KEE MIN is a heat-weldable thermoplastic membrane with a minimum thickness of either 60 or 72 mils.

	SIZE	COLOR	SKU
60 MIL	39" × 100'	White	70000372
	78" × 100'	White	70000369
	120" × 100'	White	70000690
72 MIL	78" × 75'	White	70000684



Component
M
Membrane
Single Ply

JM PVC SD Plus

JM PVC SD Plus is a heat-weldable thermoplastic polyvinyl chloride membrane available in 50, 60 and 80 mil.

	SIZE	COLOR	SKU
50 MIL	60" x 100'	White	70003055
	120" x 100'	White	70003054
60 MIL	60" x 100'	White	70003053
	120" x 100'	White	70003052
	120" x 100'	Grey	70005408
80 MIL	60" x 75'	White	70003313
	120" x 75'	White	70003314

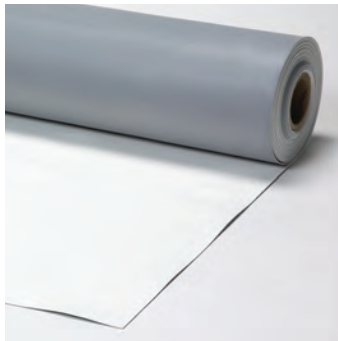


Component
M
Membrane
Single Ply

JM PVC SD Plus MIN

JM PVC SD Plus is a heat-weldable thermoplastic polyvinyl chloride membrane available in 60 and 80 mil.

	SIZE	COLOR	SKU
60 MIL	120" x 100'	White	70004498
80 MIL	120" x 75'	White	70004638



Component

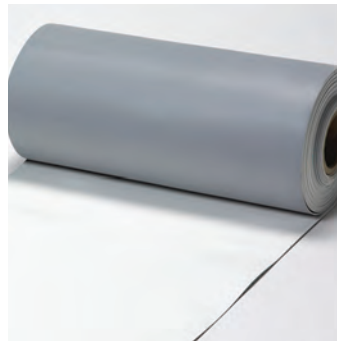
A
Accessory
Single Ply

Type
FW
Flashing Wall
FC
Curb/Corner

JM PVC Detail Membrane

Flexible, nonreinforced thermoplastic membrane used to waterproof details.

SIZE	COLOR	SKU
36" x 50'	White / Grey	70000264
36" x 50'	White / Sandstone	70000265



Component

A
Accessory
Single Ply

Type
MS
Membrane Seaming
FE
Finishing Edge

JM PVC Detail Strip

Flexible, nonreinforced thermoplastic membrane used to waterproof details.

SIZE	COLOR	SKU
6" x 150'	Black / White	70000627
8" x 150'	White / Grey	70000262
8" x 150'	Sandstone / White	70000263



Component

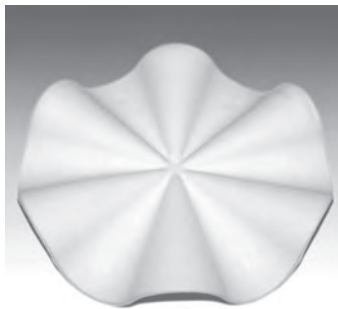
A
Accessory
Single Ply

Type
MS
Membrane Seaming

JM PVC T-Joint Patch

Flexible, nonreinforced thermoplastic material used to cover joints, discs and fasteners in the membrane.

SIZE	QTY/BOX	COLOR	SKU
4.5"	100/Box	White	70001405
4.5"	100/Box	Grey	70001406
4.5"	100/Box	Sandstone	70001407



Component

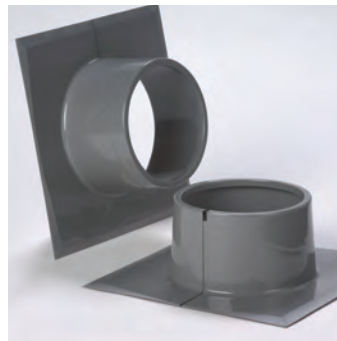
A
Accessory
Single Ply

Type
FW
Flashing Wall
FC
Curb/Corner

JM PVC Universal Corner

Flexible, nonreinforced, waffle-patterned thermoplastic membrane.

SIZE	QTY/BOX	COLOR	SKU
6"	20/Box	White	70001598
6"	20/Box	Grey	70001600
6"	20/Box	Sandstone	70001599



Component

A
Accessory
Single Ply

Type
FP
Penetration

JM PVC Penetration Pan

One-piece molded unit with a square base flange used to seal uneven difficult-to-flash membrane penetrations.

QTY/BOX	DIAMETER	SKU
12/Box	6"	70000270



Component

A

Accessory
Single Ply

Type

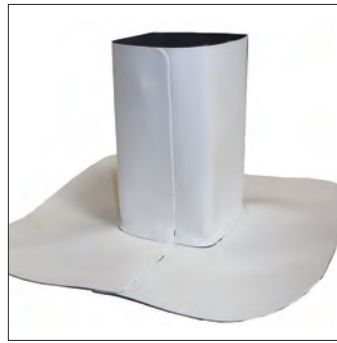
FP

Penetration

JM PVC Pipe Boot

Flexible, nonreinforced thermoplastic membrane used to flash vent stacks and round penetrations.

SIZE	QTY/BOX	COLOR	SKU
1"– 6"	10/Box	White	70001332
1"– 6"	10/Box	Grey	70001333
1"– 6"	10/Box	Sandstone	70001334



Component

A

Accessory
Single Ply

Type

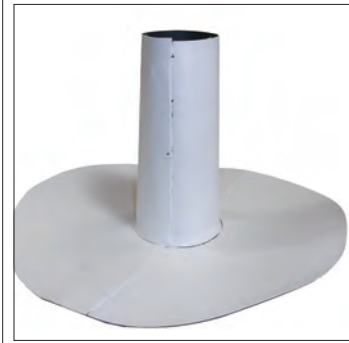
FP

Penetration

JM PVC Square Pipe Boot

Fabricated from reinforced 60 MIL JM PVC. Used to flash vent stacks and other square penetrations.

SIZE	QTY/BOX	COLOR	SKU
2"	8/Box	White	70004170
4"	8/Box	White	70004172



Component

A

Accessory
Single Ply

Type

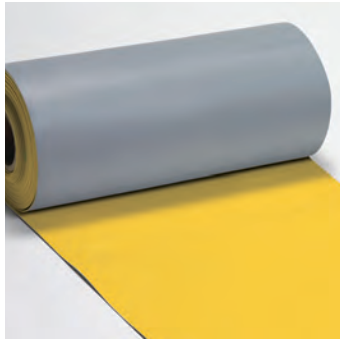
FP

Penetration

JM PVC Split Pipe Boot

Fabricated reinforced 60 MIL JM PVC, used to flash vent stacks and other round penetrations.

SIZE	QTY/BOX	COLOR	SKU
1"	8/Box	White	70004164
2"	8/Box	White	70004165
3"	8/Box	White	70004166
4"	8/Box	White	70004167
5"	8/Box	White	70004168
6"	8/Box	White	70004169



Component

A

Accessory
Single Ply

Type

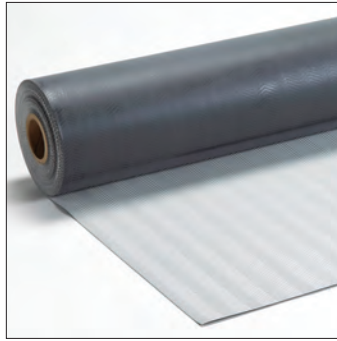
PT

Protection

JM PVC Safety Strip

45 mil, reinforced, UV-resistant PVC with Elvaloy® KEE safety warning line for roof perimeters.

SIZE	COLOR	SKU
12" × 150'	Yellow	70000599



Component

A

Accessory
Single Ply

Type

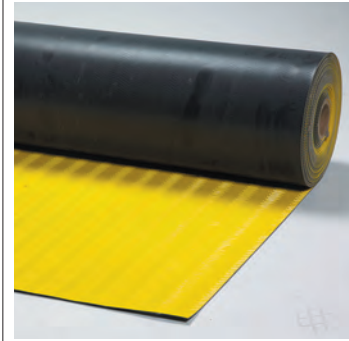
PT

Protection

JM PVC Walkpad

Flexible, polyester-reinforced thermoplastic membrane intended for use as protection around high-traffic areas.

SIZE	COLOR	SKU
36" × 60'	Grey	70000277



Component

A

Accessory
Single Ply

Type

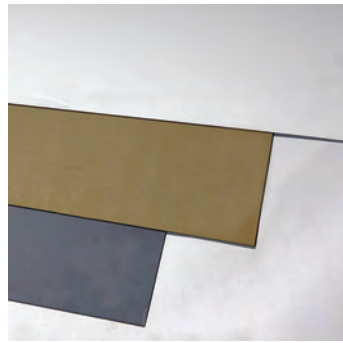
PT

Protection

JM PVC Heavy Duty Walkpad

150 mil, textured, reinforced thermoplastic membrane for use around high-traffic areas.

SIZE	COLOR	SKU
36" × 60'	Yellow	70000279



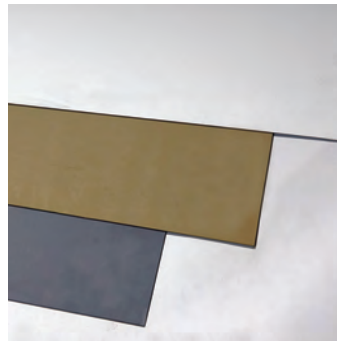
Component
A
Accessory
Single Ply

Type
FE
Finishing Edge

JM PVC Coated Metal [Galvanized Steel]

JM PVC membrane laminated with galvanized steel to be fabricated into metal flashings and edge details.

SIZE	QTY/PALLET	COLOR	SKU
4' x 10'	10/Pallet	White	70005268
4' x 10'	30/Pallet	White	70000266
4' x 10'	30/Pallet	Grey	70000267
4' x 10'	30/Pallet	Sandstone	70000268
4' x 10'	30/Pallet	Black	70000269



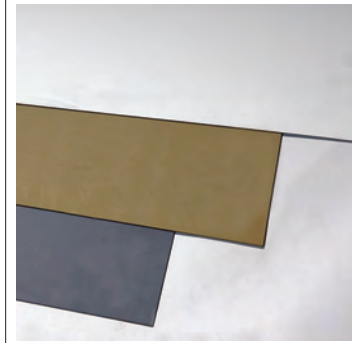
Component
A
Accessory
Single Ply

Type
FE
Finishing Edge

JM PVC Coated Metal [.040 Aluminum]

JM PVC membrane laminated with .040 aluminum to be fabricated into metal flashings and edge details.

SIZE	QTY/PALLET	COLOR	SKU
4' x 10'	30/Pallet	White	70003351



Component
A
Accessory
Single Ply

Type
FE
Finishing Edge

JM PVC Coated Metal [Stainless Steel]

JM PVC membrane laminated with stainless steel to be fabricated into metal flashings and edge details.

SIZE	QTY/PALLET	COLOR	SKU
4' x 10'	30/Pallet	White	70000637



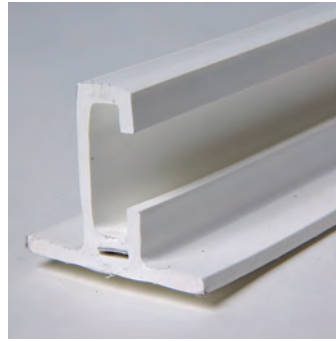
Component
A
 Accessory
 Single Ply

Type
PT
 Protection

JM Polyester Mat Protection Slipsheet

Polyester 9.0oz needle-punched UV-resistant fabric utilized as cushioning, separation or a protective layer for single ply systems.

SIZE	SKU
12' x 100'	70000275



Component
A
 Accessory
 Single Ply

Type
MS
 Membrane Seaming

JM PVC Profiles

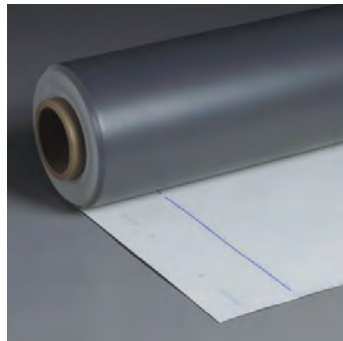
Preformed, nonreinforced, extruded, heat-weldable standing seam roofing accessory used as a decorative rib to simulate the aesthetics of a standing seam metal roof.

SIZE	QTY	COLOR	SKU
1.5" x 1.25" x 10'	24	White	70002739
1.5" x 1.25" x 10'	24	Grey	70002740
1.5" x 1.25" x 10'	24	Sandstone	70002741



TPO

thermoplastic polyolefin Our JM TPO roofing systems give you the option of a reliable, cost-effective roofing solution. We reinforce our membranes with a polyester fabric and manufacture them using an ultraviolet-resistant thermoplastic polyolefin formulation. We developed our TPO formulation to allow for extreme pliability, flexibility and weldability during the installation.



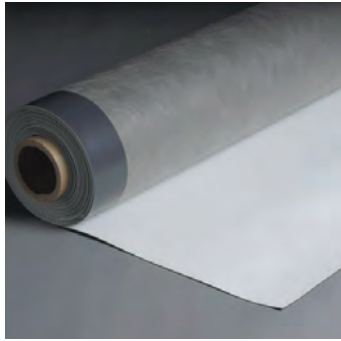
Component
M
 Membrane
 Single Ply

JM TPO Roofing Membrane

This single ply roofing membrane is ideal for quick installs on larger roofs.

	SIZE	COLOR	SKU
45 MIL	5' x 100'	White	90001397
	5' x 100'	Grey	90001391
	5' x 100'	Tan	90001394
	6' x 100'	White	90026093
	8' x 100'	White	90001398
	8' x 100'	Grey	90001392
	10' x 100'	White	90001399
	10' x 100'	Grey	90001393
	10' x 100'	Tan	90001396
	12' x 100'	White	90026094
	12' x 100'	Grey	90028891

	SIZE	COLOR	SKU
60 MIL	5' x 100'	White	90001406
	5' x 100'	Grey	90001400
	5' x 100'	Tan	90001403
	6' x 100'	White	90026095
	6' x 100'	Grey	90026690
	8' x 100'	White	90001407
	8' x 100'	Grey	90001401
	8' x 100'	Tan	90001404
	10' x 100'	White	90001408
	10' x 100'	Grey	90001402
	10' x 100'	Tan	90001405
	12' x 100'	White	90026096
	12' x 100'	Grey	90026691
	12' x 100'	Tan	90026693
	80 MIL	5' x 100'	White
5' x 75'		Grey	90001409
5' x 75'		Tan	90001412
6' x 75'		White	90026694
8' x 100'		White	90029784
8' x 75'		Grey	90001410
8' x 75'		Tan	90001413
10' x 100'		White	90029673
10' x 75'		Grey	90001411
12' x 75'	Tan	90001414	
12' x 75'	White	90026695	



Component
M
Membrane
Single Ply

JM TPO Fleece-Backed Roofing Membrane

In-line application of fleece allows for stronger bond for polyester backing that gives more flexibility in varying substrates for mechanically fastened or adhered systems.

	SIZE	COLOR	SKU
60 MIL	10' × 100'	White	90001694
	10' × 100'	Grey	90014106
	10' × 100'	Tan	90013979
	10' × 75'	White	90024979*
80 MIL	10' × 50'	White	90001558
	10' × 50'	Grey	90018483
	10' × 50'	White	90025016*

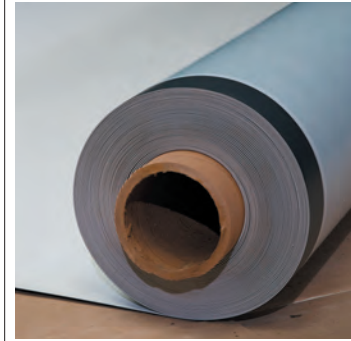


Component
M
Membrane
Single Ply

JM TPO Roofing Membrane MIN

Tested continuously with a state-of-the-art thickness gauge to verify that the thickness valued by our customers is incorporated into the sheet.

	SIZE	COLOR	SKU
45 MIL	5' × 100'	White	90027518
	8' × 100'	White	90027520
	10' × 100'	White	90027521
60 MIL	5' × 100'	White	90021710
	10' × 100'	White	90013942
	12' × 100'	White	90027525



Component
M
Membrane
Single Ply

JM TPO Self-Adhered Roofing Membrane

Thermoplastic Polyolefin Self-Adhered Membrane available in 60 mil thickness.

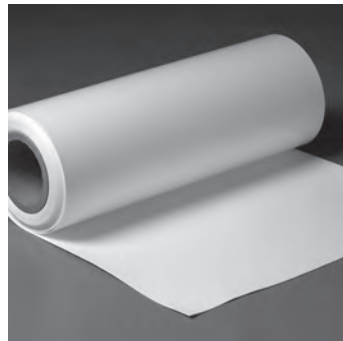
	SIZE	COLOR	SKU
60 MIL	10' × 100'	White	90025037

JM TPO Self-Adhered Flashing Membrane

Self-Adhered Flashing Membrane for use in self-adhering TPO systems on curbs and parapet walls.

	SIZE	COLOR	SKU
60 MIL	5' × 100'	White	90025229

*Heavy-Fleece Backed Membrane for Hot Asphalt Application in hybrid systems.



Component
A
Accessory
Single Ply

JM TPO Detail Membrane

Flexible, non-reinforced TPO membrane used to wrap pipes and vertical stacks.

SIZE	COLOR	SKU
24" × 50'	White	90001241
24" × 50'	Grey	90001595
24" × 50'	Tan	90001596
48" × 50'	White	90001693

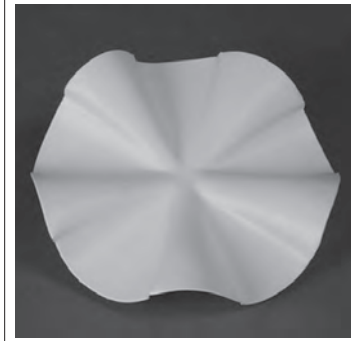


Component
A
Accessory
Single Ply
Type
MS
Membrane Seaming

JM TPO T-Joint Patch

Flexible, non-reinforced TPO discs to seal seam laps where perimeter and/or header sheets intersect (T-joint) in TPO systems.

SIZE	QTY/BOX	COLOR	SKU
4.5"	100/Box	White	70001419
4.5"	100/Box	Grey	70001420
4.5"	100/Box	Tan	70001421

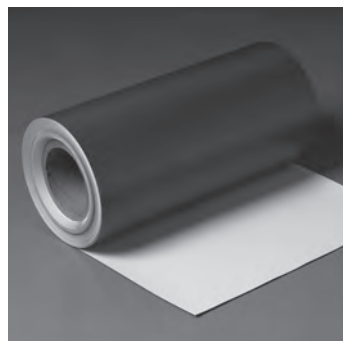


Component
A
Accessory
Single Ply
Type
FW
Flashing Wall
FC
Curb/Corner

JM TPO Universal Corner

Flexible, nonreinforced, waffle-patterned TPO membrane used around inside and outside corners.

SIZE	QTY/BOX	COLOR	SKU
6"	20/Box	White	70001601
6"	20/Box	Grey	70001604
6"	20/Box	Tan	70001603

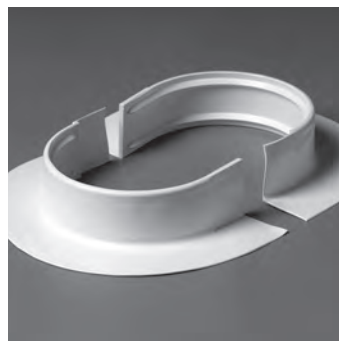


Component
A
Accessory
Single Ply
Type
FC
Curb/Corner

JM TPO Curb Flashing

JM TPO Curb Flashing is a 60 mil reinforced TPO membrane with an encapsulated edge used on curbs and parapet walls. This product eliminates the need for field cutting and edge sealant.

SIZE	COLOR	SKU
18" × 50'	White	90001886
18" × 50'	Grey	90018480
18" × 50'	Tan	90023042

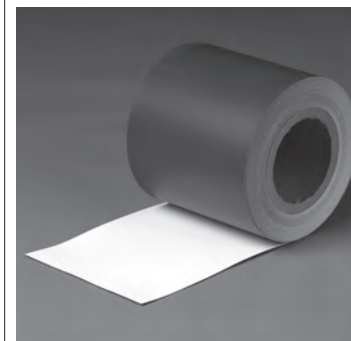


Component
A
Accessory
Single Ply
Type
FP
Penetration

JM TPO Penetration Pocket

Two-piece, molded unit with a rounded base flange used to seal uneven or irregular penetrations. A welding tab is included to seal the penetration pan once positioned.

QTY/BOX	SKU
5/Box	70000673



Component
A
Accessory
Single Ply
Type
MS
Membrane Seaming
FE
Finishing Edge

JM TPO Reinforced Cover Strip

60 mil reinforced, heat-weldable TPO membrane primarily used to "strip in" flashing details, gravel stops, TPO coated metal joints, and exposed fasteners in the roof field.

SIZE	COLOR	SKU
8" × 50'	White	90001881
8" × 50'	Grey	90018479
8" × 50'	Tan	90023041



Component
A
 Accessory
 Single Ply

Type
FW
 Flashing Wall
FE
 Finishing Edge

JM TPO Cover Tape

TPO cover tape is a flexible, non-reinforced TPO membrane used to strip-in metal flanges.

SIZE	QTY/BOX	COLOR	SKU
6" x 100'	2/Box	White	70000322
6" x 100'	2/Box	Grey	70000323
6" x 100'	2/Box	Tan	70000324
10" x 100'	1/Box	White	70000662



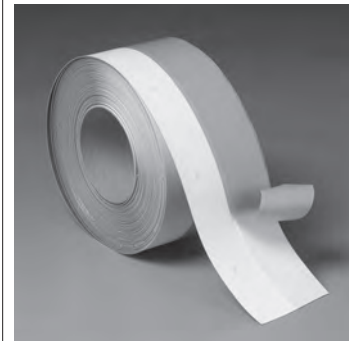
Component
A
 Accessory
 Single Ply

Type
PR
 Perimeter Reinforcement

JM TPO Reinforced Termination Strip (RTS)

Reinforced TPO membrane with factory-applied adhesive tape.

SIZE	QTY/BOX	COLOR	SKU
6" x 100'	2/Box	White	70000329



Component
A
 Accessory
 Single Ply

Type
PR
 Perimeter Reinforcement

JM TPO Reinforced Perimeter Strip (RPS)

Reinforced TPO with factory-applied adhesive tape used to secure membrane from underneath in perimeters and corners.

SIZE	QTY/BOX	COLOR	SKU
10" x 100'	1/Box	White	70000598



Component
A
 Accessory
 Single Ply

Type
FW
 Flashing Wall
FE
 Finishing Edge
FP
 Penetration

JM White EPDM Peel and Stick Flashing

For TPO Application. Easily forms flashings around corners and penetrations that cannot be properly detailed with TPO membrane.

SIZE	QTY/BOX	COLOR	SKU
6" x 100'	2/Box	White	70008833
9" x 50'	2/Box	White	70008834
12" x 50'	2/Box	White	70008835



Component
A
 Accessory
 Single Ply

Type
FW
 Flashing Wall
FE
 Finishing Edge
FP
 Penetration

JM White EPDM Peel and Stick Corners

Inside/Outside corners. For TPO Application. Easily forms flashings around corners and penetrations that cannot be properly detailed with TPO membrane.

SIZE	QTY/BOX	COLOR	SKU
7" x 9"	2/Box	White	70008896



Component

A

Accessory

Single Ply

Type

FP

Penetration

JM TPO Pipe Boot [Peel and Stick]

Flexible, non-reinforced TPO membrane used to flash vent stacks and round penetrations.

SIZE	QTY/BOX	COLOR	SKU
1"– 6"	10/Box	White	70001363



Component

A

Accessory

Single Ply

Type

FP

Penetration

JM TPO Pipe Boot

Flexible, non-reinforced TPO membrane used to flash vent stacks and round penetrations.

SIZE	QTY/BOX	COLOR	SKU
1"– 6"	10/Box	White	70000541
1"– 6"	10/Box	Grey	70000302
1"– 6"	10/Box	Tan	70000301



Component

A

Accessory

Single Ply

Type

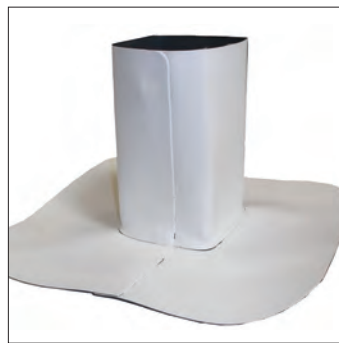
FP

Penetration

JM TPO Split Pipe Boot

Prefabricated, reinforced 60 mil JM TPO rounded to shape a pipe from 1" to 6" in diameter for flashing applications.

SIZE	QTY/BOX	COLOR	SKU
1"	8/Box	White	70004173
2"	8/Box	White	70004174
3"	8/Box	White	70004175
4"	8/Box	White	70004176
5"	8/Box	White	70004177
6"	8/Box	White	70004178



Component

A

Accessory

Single Ply

Type

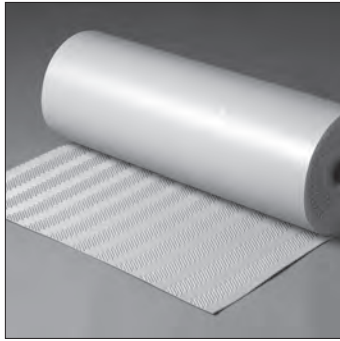
FP

Penetration

JM TPO Square Pipe Boot

A prefabricated, reinforced 60 mil JM TPO, square boot in 2" and 4" (5.08 cm and 10.16 cm) sizes for tube-flashing application.

SIZE	QTY/BOX	COLOR	SKU
2"	8/Box	White	70004179
4"	8/Box	White	70004180



Component
A
 Accessory
 Single Ply
Type
PT
 Protection

JM TPO Walkpad

Textured, flexible TPO membrane intended for use as walkway material and protection around high-traffic areas.

SIZE	COLOR	SKU
30" × 50'	Grey	90017894



Component
A
 Accessory
 Single Ply
Type
PT
 Protection

JM TPO Safety Walkpad

Provides a safe, stable and maintenance-free walkway for quick and easy access to rooftop equipment in high traffic areas.

SIZE	COLOR	SKU
30" × 50'	Yellow	90036679

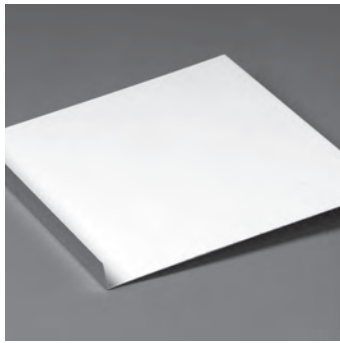


Component
A
 Accessory
 Single Ply
Type
PT
 Protection

JM Single Ply Safety Strip [Peel and Stick]

Provides safety measures and protection on rooftop areas of caution.

SIZE	COLOR	SKU
5.5" × 100'	Yellow	70005149



Component

A

Accessory
Single Ply

Type

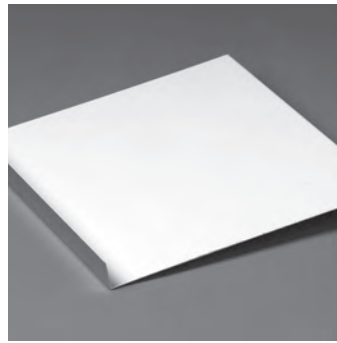
FE

Finishing Edge

JM TPO Coated Metal [Galvanized Steel]

Nonreinforced JM TPO membrane laminated with galvanized steel to be fabricated into metal flashings and edge details.

SIZE	QTY/PALLET	COLOR	SKU
4' x 10'	30/Pallet	Grey	70001411
4' x 10'	30/Pallet	Tan	70001412
4' x 10'	10/Pallet	White	70005269
4' x 10'	30/Pallet	White	70000316



Component

A

Accessory
Single Ply

Type

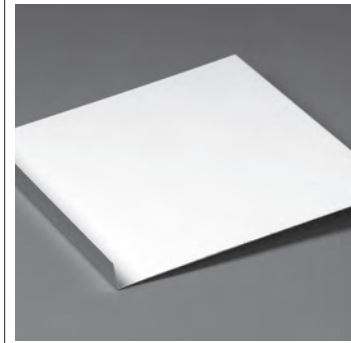
FE

Finishing Edge

JM TPO Coated Metal [.040 Aluminum]

Nonreinforced JM TPO membrane laminated with .040 aluminum to be fabricated into metal flashings and edge details.

SIZE	QTY/PALLET	COLOR	SKU
4' x 10'	30/Pallet	White	70004220



Component

A

Accessory
Single Ply

Type

FE

Finishing Edge

JM TPO Coated Metal [Stainless Steel]

Nonreinforced JM TPO membrane laminated with stainless steel to be fabricated into metal flashings and edge details.

SIZE	QTY/PALLET	COLOR	SKU
4' x 10'	30/Pallet	White	70004637



Component

A

Accessory

Single Ply

Type

PT

Protection

JM 3 oz Polyester Mat Protection Slipsheet

Needle-punched, non-UV-resistant polyester separation layer used for TPO, PVC and EPDM mechanically fastened systems and ballasted EPDM systems.

SIZE

130" x 500'

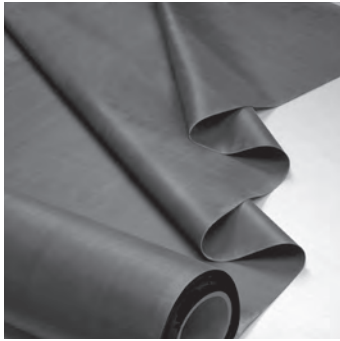
SKU

90017402



EPDM

ethylene propylene diene monomer With superior durability and flexibility, EPDM is a smart roofing solution. Our EPDM production facility is one of the world's most technologically advanced, allowing us to extrude our sheets instead of using the traditional calendering process. Our EPDM is manufactured thicker with a more uniform surface finish. This advancement in manufacturing cleaner sheets requires less preparation to ensure a stronger bond during installation. The curing of EPDM is referring to the vulcanization of the product. All of our sheets and many of our accessories are fully cured. Some flashing tapes, pre-molded pipe boots and corners are partially cured or uncured. This gives the flashing materials greater flexibility and adhesion when using them in the field.



Component
M
Membrane
Single Ply

JM EPDM NR

45, 60 and 90 mil cured, nonreinforced ethylene propylene diene monomer sheets.

	SIZE	SKU
45 MIL	10' × 50'	90017403
	10' × 100'	90017400
	20' × 50'	90017405
	20' × 100'	90017404
	30' × 100'	90017406
60 MIL	40' × 100'	90017407
	10' × 50'	90017409
	10' × 100'	90017408
	16' 8" × 100'	90017416
	20' × 50'	90017411
	20' × 100'	90017410
90 MIL	30' × 100' (1 Fold)	90017412
	40' × 100'	90023069
	10' × 100'	90017413



Component
M
Membrane
Single Ply

JM EPDM R

Cured ethylene propylene diene monomer reinforced with a tough 1,000+ denier polyester mat.

	SIZE	SKU
60 MIL	10' × 100'	90017415

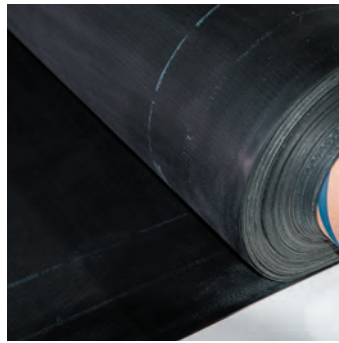


Component
M
Membrane
Single Ply

JM EPDM NR FIT Systems

Nonreinforced, cured EPDM membrane with factory in-seam tape.

	FIT	SIZE	SKU
45 MIL	4" (1 Side)	10' x 100'	90028837
	4" (1 Side)	20' x 100'	90028840
	4" (1 Side)	30' x 100'	90028841
60 MIL	4" (1 Side)	10' x 100'	90028826
	4" (1 Side)	16' 8" x 100'	90028827
	4" (1 Side)	20' x 100'	90028831
	4" (1 Side)	30' x 100'	90028832
	6" (1 Side)	10' x 100'	90028829
	6" (1 Side)	16' 8" x 100'	90028836
	6" (1 Side)	20' x 100'	90028838
	6" (1 Side)	30' x 100'	90028839
90 MIL	4" (1 Side)	10' x 100'	90028835
	6" (1 Side)	10' x 100'	90028828

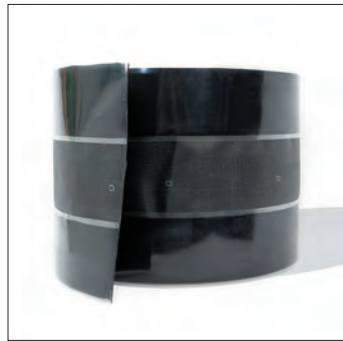


Component
M
Membrane
Single Ply

JM EPDM R FIT Systems

Cured ethylene propylene diene monomer reinforced with a tough 1,000+ denier polyester mat and factory in-seam tape.

	FIT	SIZE	SKU
60 MIL	4" (1 Side)	10' x 100'	90028830
	6" (1 Side)	10' x 100'	90028931



Component
A
 Accessory
 Single Ply
Type
PR
 Perimeter Reinforcement

JM EPDM Reinforced Perimeter Strip

Used to secure EPDM membrane from underneath in perimeters and corners.

SIZE	SKU
10" x 100'	70005550



Component
A
 Accessory
 Single Ply
Type
FC
 Curb/Corner

JM EPDM Pre-Taped Curb Flashing

60 mil thick, EPDM with a release liner and a 3" or 6" factory laminated, self-adhering EPDM tape to efficiently flash curbs with a consistent, clean appearance.

SIZE	SKU
18" x 50'	70004383
24" x 50'	70004384

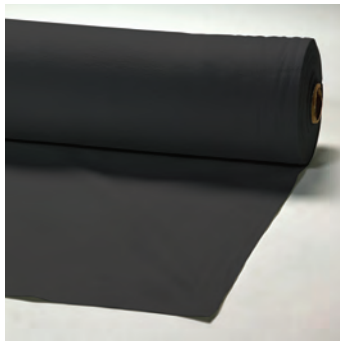


Component
A
 Accessory
 Single Ply
Type
MS
 Membrane Seaming

JM EPDM Seam Tape Plus

3" or 6" wide, self-adhering, extruded EPDM pressure-sensitive tape. Each box of JM EPDM Seam Tape Plus includes scrubber pads and handle for seam priming.

SIZE	QTY/BOX	SKU
3" x 100'	4 Rolls/Box	70001631
6" x 100'	2 Rolls/Box	70001632



Component
A
 Accessory
 Single Ply
Type
PT
 Protection

JM EPDM Protective Stone Mat

UV-resistant, polypropylene, needle-punched fabric for use as a slipsheet between the membrane and ballast/pavers.

SIZE	SKU
15' x 300'	70000100

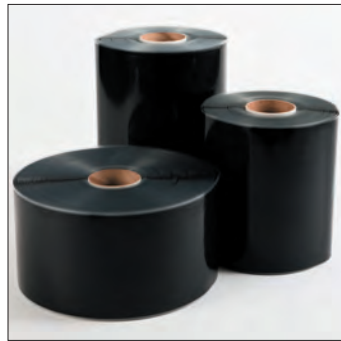


Component
A
 Accessory
 Single Ply
Type
PT
 Protection

JM 3oz Polyester Slipsheet

Needle-punched, non-UV-resistant polyester separation layer used for TPO, PVC and EPDM mechanically fastened systems and ballasted EPDM systems.

SIZE	SKU
130" x 500'	90017402



Component
A
Accessory
Single Ply

Type
FW
Flashing Wall
FC
Curb/Corner
FP
Penetration

JM EPDM Peel and Stick Flashing

6", 9" or 12" wide, uncured EPDM with a diamond texture on the top side, clear release liner and factory-applied pressure-sensitive tape.

	SIZE	QTY/BOX	SKU
60 MIL	6" x 100'	2 Rolls/Box	70004127
	9" x 50'	1 Roll/Box	70004128
	12" x 50'	1 Roll/Box	70004129



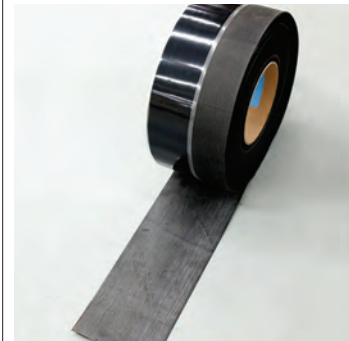
Component
A
Accessory
Single Ply

Type
MS
Membrane Seaming
FE
Finishing Edge

JM EPDM Peel and Stick Sealing Strip

Cured 6", 9" or 12" wide EPDM strip with a matte finish and factory applied pressure-sensitive tape.

	SIZE	QTY/BOX	SKU
	6" x 100'	2 Rolls/Box	70006236
	9" x 50'	1 Roll/Box	70006237
	12" x 50'	1 Roll/Box	70006238



Component
A
Accessory
Single Ply

Type
PR
Perimeter Reinforcement

JM EPDM Reinforced Termination Strip w/ Tape

6" wide, 45 mil strip with factory-applied pressure-sensitive tape to secure field membrane at any angle change greater than 2 in/ft.

	SIZE	QTY/BOX	SKU
	6" x 100'	2 Rolls/Box	70005569



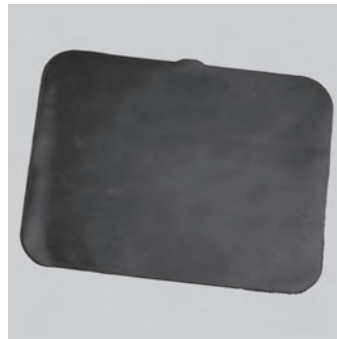
Component
A
Accessory
Single Ply

Type
PT
Protection

JM EPDM Peel and Stick Walkpad

3/8" x 30" x 30" heavy-duty, solid rubber pads with three rows of 3" factory-applied pressure-sensitive tape to protect roofs from damaging foot traffic.

	SIZE	QTY/PALLET	SKU
	30" x 30"	50/Pallet	70000104



Component
A
Accessory
Single Ply

Type
FC
Curb/Corner

JM EPDM Peel and Stick Inside/Outside Corner

60 mil peel and stick uncured EPDM used to install inside or outside corners.

	SIZE	QTY/BOX	SKU
	7" x 9"	20/Box	70004212



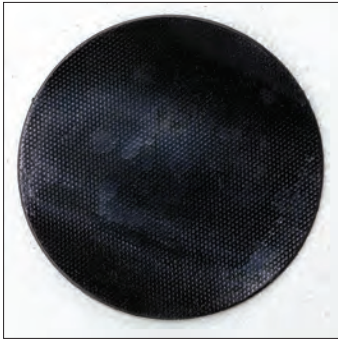
Component
A
Accessory
Single Ply

Type
FP
Penetration

JM EPDM Peel and Stick Pipe Boot

EPDM manufactured with conical steps and factory-applied pressure-sensitive tape around the base.

	SIZE	QTY/BOX	SKU
	1" - 6"	10/Box	70000084



Component

A

Accessory

Single Ply

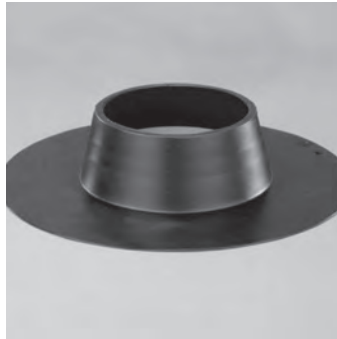
Type

MS
Membrane
Seaming

JM EPDM Peel and Stick T-Joint Patch

Round, uncured EPDM with a factory-applied pressure-sensitive tape.

SIZE	QTY/BOX	SKU
5.75" Round	100/Box	70004211



Component

A

Accessory

Single Ply

Type

FP
Penetration

JM EPDM Peel and Stick Pourable Sealer Pocket

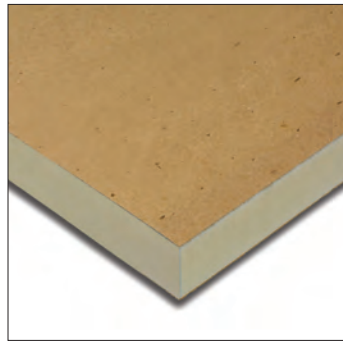
One-piece, prefabricated unit with a factory-applied pressure-sensitive tape on the bottom of the base flange. Use to seal difficult-to-flash penetrations through the membrane.

SIZE	QTY/BOX	SKU
6" (15.2 cm) Diameter	12/Box	70000093



ISO & COVER BOARDS

Our broad line of polyiso insulation products can address your R-value requirements. We are a PIMA member and are audited by their QualityMark program. We have a wide range of facers that cover all ASTM Type II designations, and we offer a full line of composite products. Adding a cover board enhances the long-term performance of a commercial roofing system. We offer high-density polyiso, low-density polyiso, cement and gypsum cover boards. We've got you covered with solutions for all situations you might encounter: a system for high-impact zones, fire-retardant solutions that meet UL Class A requirements, products that do not support mold growth and more.



Component
I
Insulation
Single Ply

Type
HT
High Thermal

ENRGY 3® [Flat]

High-thermal, closed-cell polyisocyanurate foam core insulation board with universal fiber glass-reinforced facers.

1.0" - 1.4"

THICKNESS	SIZE	SKU
1.0"	48" x 48"	90000907
1.0"	48" x 96"	90000912
1.1"	48" x 48"	90001936
1.1"	48" x 96"	90000913
1.2"	48" x 48"	90000909
1.2"	48" x 96"	90000914
1.3"	48" x 48"	90000910
1.3"	48" x 96"	90000915
1.4"	48" x 48"	90000911
1.4"	48" x 96"	90000916

1.5" - 1.9"

THICKNESS	SIZE	SKU
1.5"	48" x 48"	90000917
1.5"	48" x 96"	90001421
1.6"	48" x 48"	90000918
1.6"	48" x 96"	90000949
1.7"	48" x 48"	90000919
1.7"	48" x 96"	90000950
1.75"	48" x 48"	90000920
1.75"	48" x 96"	90000951
1.8"	48" x 48"	90000921
1.8"	48" x 96"	90000952
1.9"	48" x 48"	90001581
1.9"	48" x 96"	90000953

2.0" - 2.4"

THICKNESS	SIZE	SKU
2.0"	48" x 48"	90000923
2.0"	48" x 96"	90000954
2.1"	48" x 48"	90000924
2.1"	48" x 96"	90000955
2.2"	48" x 48"	90030034
2.2"	48" x 96"	90030035
2.25"	48" x 48"	90000926
2.25"	48" x 96"	90000957
2.3"	48" x 48"	90000927
2.3"	48" x 96"	90000958
2.4"	48" x 48"	90000928
2.4"	48" x 96"	90000959

2.5" - 2.9"

THICKNESS	SIZE	SKU
2.5"	48" x 48"	90000929
2.5"	48" x 96"	90000960
2.6"	48" x 48"	90000930
2.6"	48" x 96"	90000961
2.7"	48" x 48"	90000931
2.7"	48" x 96"	90000962
2.75"	48" x 48"	90000932
2.75"	48" x 96"	90000963
2.8"	48" x 48"	90000933
2.8"	48" x 96"	90000964
2.9"	48" x 48"	90001461
2.9"	48" x 96"	90000965

3.0" - 3.4"

THICKNESS	SIZE	SKU
3.0"	48" x 48"	90000934
3.0"	48" x 96"	90000966
3.1"	48" x 48"	90000935
3.1"	48" x 96"	90000967
3.2"	48" x 48"	90000936
3.2"	48" x 96"	90000968
3.25"	48" x 48"	90000937
3.25"	48" x 96"	90000969
3.3"	48" x 48"	90000938
3.3"	48" x 96"	90000970
3.4"	48" x 48"	90000939
3.4"	48" x 96"	90000971

3.5" - 3.9"

THICKNESS	SIZE	SKU
3.5"	48" x 48"	90000940
3.5"	48" x 96"	90000972
3.6"	48" x 48"	90000941
3.6"	48" x 96"	90000973
3.7"	48" x 48"	90000942
3.7"	48" x 96"	90000974
3.8"	48" x 48"	90000943
3.8"	48" x 96"	90000975
3.9"	48" x 48"	90000944
3.9"	48" x 96"	90000976

4.0" - 4.5"

THICKNESS	SIZE	SKU
4.0"	48" x 48"	90000945
4.0"	48" x 96"	90000977
4.1"	48" x 48"	90001569
4.1"	48" x 96"	90001571
4.2"	48" x 48"	90016800
4.2"	48" x 96"	90012663
4.3"	48" x 48"	90016263
4.3"	48" x 96"	90016271
4.4"	48" x 48"	90016801
4.4"	48" x 96"	90016802
4.5"	48" x 48"	90000986
4.5"	48" x 96"	90000978



Component
I
Insulation
Single Ply

Type
HT
High Thermal

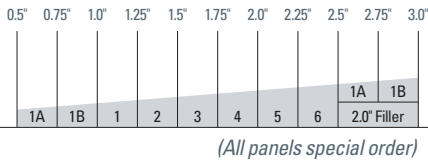
TP
Tapered

ENRGY 3® [Tapered]

High-thermal, closed-cell polyisocyanurate foam core insulation board with universal fiber glass-reinforced facers.

1/16" PER FOOT SLOPE

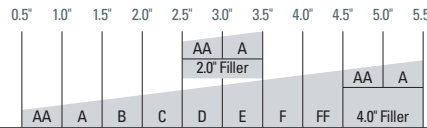
* THICKNESS	SIZE	SKU
1A 0.50 – 0.75"	48" × 48"	90001137
1B 0.75 – 1.0"	48" × 48"	90001138
1 1.0 – 1.25"	48" × 48"	90001157
2 1.25 – 1.5"	48" × 48"	90001134
3 1.5 – 1.75"	48" × 48"	90001135
4 1.75 – 2.0"	48" × 48"	90001136
5 2.0 – 2.25"	48" × 48"	90002034
6 2.25 – 2.5"	48" × 48"	90002035



(All panels special order)

1/8" PER FOOT SLOPE

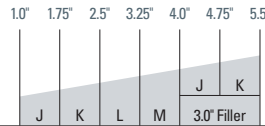
* THICKNESS	SIZE	SKU
AA 0.50 – 1.0"	48" × 48"	90001159
A 1.0 – 1.5"	48" × 48"	90001158
B 1.5 – 2.0"	48" × 48"	90001160
C 2.0 – 2.5"	48" × 48"	90001162
D 2.5 – 3.0"	48" × 48"	90001163
E 3.0 – 3.5"	48" × 48"	90001164
F 3.5 – 4.0"	48" × 48"	90001165
FF 4.0 – 4.5"	48" × 48"	90002005



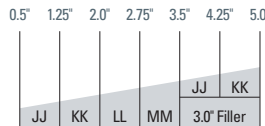
(Extended and special order panels: D, E, F, FF)

3/16" PER FOOT SLOPE

* THICKNESS	SIZE	SKU
J 1.0 – 1.75"	48" × 48"	90001166
JJ 0.50 – 1.25"	48" × 48"	90001167
K 1.75 – 2.5"	48" × 48"	90001168
KK 1.25 – 2.0"	48" × 48"	90001169
L 2.5 – 3.25"	48" × 48"	90001464
LL 2.0 – 2.75"	48" × 48"	90001669
M 3.25 – 4.0"	48" × 48"	90001465



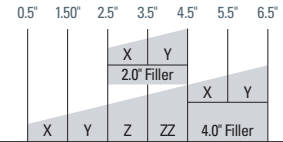
(All panels special order)



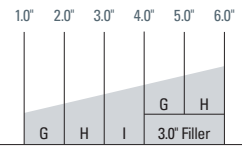
(All panels special order)

1/4" PER FOOT SLOPE

* THICKNESS	SIZE	SKU
G 0.50 – 1.5"	48" × 48"	90001148
H 1.0 – 2.0"	48" × 48"	90001145
I 1.5 – 2.5"	48" × 48"	90001149
X 2.0 – 3.0"	48" × 48"	90001146
Y 2.5 – 3.5"	48" × 48"	90001151
Z 3.0 – 4.0"	48" × 48"	90001147
ZZ 3.5 – 4.5"	48" × 48"	90001967



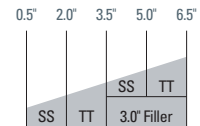
(Extended and special order panels: Z, ZZ)



(All panels special order)

3/8" PER FOOT SLOPE

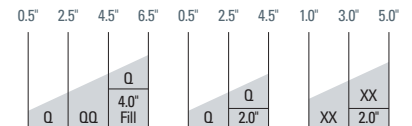
* THICKNESS	SIZE	SKU
SS 0.50 – 2.0"	48" × 48"	90001170
TT 2.0 – 3.5"	48" × 48"	90001171



(All panels special order)

1/2" PER FOOT SLOPE

* THICKNESS	SIZE	SKU
Q 0.50 – 2.5"	48" × 48"	90001140
QQ 2.5 – 4.5"	48" × 48"	90001144
XX 1.0 – 3.0"	48" × 48"	90001141



(Extended and special order panels: QQ)

(Special order)

*Panel designation.



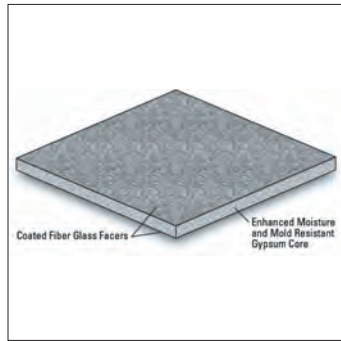
Component

- B**
Cover Board
- Multi-Ply
Single Ply
- Type
- GY**
Gypsum
- LT**
Low Thermal

SECUROCK® Gypsum-Fiber Roof Board

Gypsum- and cellulose-fiber roof board with integral water-resistant core.

THICKNESS	SIZE	SKU
1/4"	4' x 4'	70000786
1/4"	4' x 8'	70000793
3/8"	4' x 4'	70000795
3/8"	4' x 8'	70000794
1/2"	4' x 4'	70000784
1/2"	4' x 8'	70000790
5/8"	4' x 4'	70000759
5/8"	4' x 8'	70000791

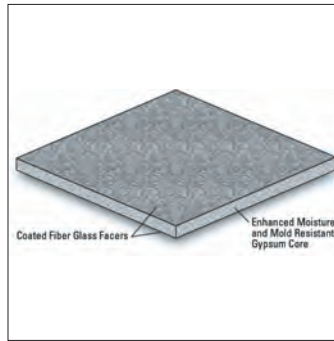


Component
B
Cover Board
Multi-Ply
Single Ply
Type
GY
Gypsum
LT
Low Thermal

DensDeck® Prime Roof Board

Enhanced coated glass mat faced gypsum cover board ideal for fully adhered systems provides a broader compatibility and higher performance with roofing adhesives.

THICKNESS	SIZE	SKU
1/4"	4' x 4'	70004311
1/4"	4' x 8'	70004314
1/2"	4' x 4'	70004312
1/2"	4' x 8'	70004315
5/8"	4' x 4'	70004313
5/8"	4' x 8'	70004316



Component
B
Cover Board
Multi-Ply
Single Ply
Type
GY
Gypsum
LT
Low Thermal

DensDeck® StormX™ Prime Roof Board

This gypsum cover board is enhanced with a coated glass-mat facer that achieves FM Very Severe Hail (VHS) approval rating.

THICKNESS	SIZE	SKU
5/8"	4' x 4'	70006777
5/8"	4' x 8'	70006778

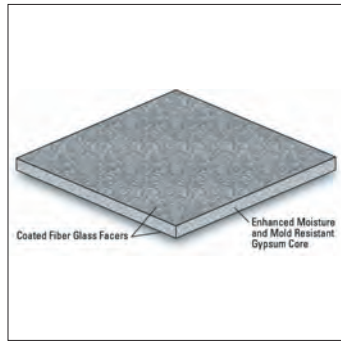


Component
B
Cover Board
Multi-Ply
Single Ply
Type
GY
Gypsum
LT
Low Thermal

DEXcell® FA Glass-Mat Roof Board

Gypsum Cover Board with heavy duty coated fiberglass facer ideal for fully adhered systems improves handling and strength. Scores and snaps easily.

THICKNESS	SIZE	SKU
1/4"	4' x 4'	70004775
1/4"	4' x 8'	70004778
1/2"	4' x 4'	70004776
1/2"	4' x 8'	70004779
5/8"	4' x 4'	70004777
5/8"	4' x 8'	70004780



Component
B
Cover Board
Single Ply

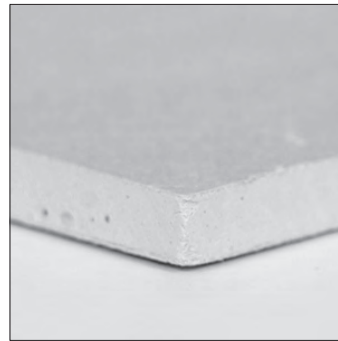
Type
GY
Gypsum

LT
Low Thermal

DensDeck® Roof Board

Glass-mat-faced gypsum cover board.

THICKNESS	SIZE	SKU
1/4"	4' x 8'	70004287
1/2"	4' x 8'	70004288
5/8"	4' x 8'	70004289



Component
B
Cover Board
Single Ply

Type
GY
Gypsum

LT
Low Thermal

DEXcell® Glass-Mat Roof Board

Gypsum cover board with coated fiberglass facer ideal for mechanically fastened systems improves handling and strength. Scores and snaps easily.

THICKNESS	SIZE	SKU
1/4"	4' x 4'	70004769
1/4"	4' x 8'	70004772
1/2"	4' x 4'	70004770
1/2"	4' x 8'	70004773
5/8"	4' x 4'	70004771
5/8"	4' x 8'	70004774



Component
B
Cover Board
Multi-Ply
Single Ply

Type
GY
Gypsum

LT
Low Thermal

SECUROCK® Ultralight Glass-Mat Roof Board

Glass-mat-reinforced roof board with fiber glass facer and back. Unmatched mat-to-core tensile bond strength, easy to cut and has reduced facer delamination.

THICKNESS	SIZE	SKU
1/4"	4' x 8'	70000796
1/2"	4' x 8'	70000797
5/8"	4' x 8'	70000798



Component
B
Cover Board
Single Ply

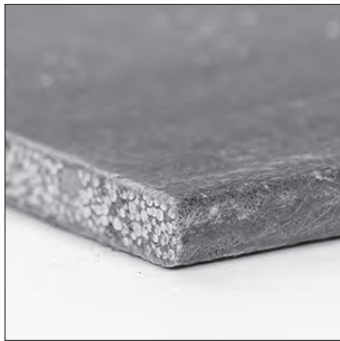
Type
GY
Gypsum

LT
Low Thermal

DEXcell® FA VSH Glass-Mat Roof Board

Gypsum cover board with coated fiberglass facer ideal for mechanically fastened systems improves handling and strength. Achieves FM Very Severe Hail (VSH) requirements.

THICKNESS	SIZE	SKU
5/8"	4' x 4'	70008750
5/8"	4' x 8'	70008751



Component

- B**
Cover Board
- Multi-Ply
Single Ply
- Type
- CM**
Cement
- LT**
Low Thermal

DEXcell® Cement Roof Board

Cement and glass mesh cover board. Provides exceptional impact resistance.

THICKNESS	SIZE	SKU
7/16"	4' x 4'	70004781
7/16"	4' x 8'	70004782



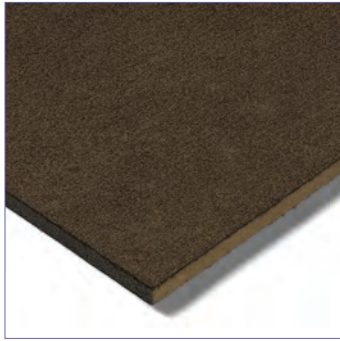
Component

- B**
Cover Board
- Multi-Ply
Single Ply
- Type
- CM**
Cement
- LT**
Low Thermal

SECUROCK® Cement Roof Board

Aggregated Portland cement slurry with polymer-coated, glass-fiber mesh. Ideal for liquid applied membrane roof systems.

THICKNESS	SIZE	SKU
1/2"	4' x 4'	70004249
1/2"	4' x 8'	70004250



Component

B

Cover Board

Multi-Ply
Single Ply

Type

PL

Perlite

LT

Low Thermal

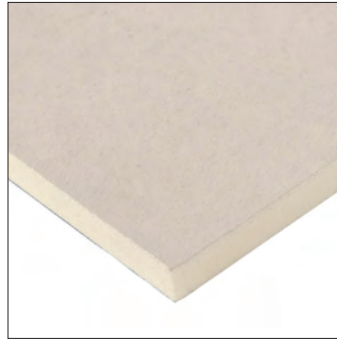
HD

High Density

RetroPlus™ Roof Board

High-density, expanded, perlite-based cover board engineered to optimize system performance across all applications.

THICKNESS	SIZE	SKU
1/2"	4' x 4'	90002007
1/2"	4' x 8'	90002008



Component

B

Cover Board

Multi-Ply
Single Ply

Type

PF

Poly Foam

HD

High Density

ProtectorR® HD

1/2" high-density polyisocyanurate cover board with lightweight formula offers labor and installation efficiencies and allows more options for situations where the overall weight is a concern. The high R-value (2.5 R) provides significantly more thermal insulation than wood fiber or gypsum boards.

THICKNESS	SIZE	SKU
1/2"	48" x 48"	90027899
1/2"	48" x 96"	90027900



Component

B

Cover Board
Single Ply

Type

PF

Poly Foam

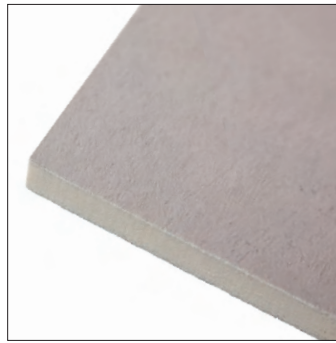
HT

High Thermal

SeparatorR®

Re-cover board with closed cell polyisocyanurate foam core provides high R-value per inch, light weight and flexibility in re-cover and metal retrofit applications.

THICKNESS	SIZE	SKU
1/2"	48" x 48"	90024356
1/2"	48" x 96"	90024357



Component

B

Cover Board
Single Ply

Type

PF

Poly Foam

HT

High Thermal

SeparatorR® CGF

Inorganic re-roof cover board with closed cell polyisocyanurate foam technology that provides additional insulation value with lightweight and low water absorption characteristics.

THICKNESS	SIZE	SKU
1/2"	48" x 48"	90027858
1/2"	48" x 96"	90027859

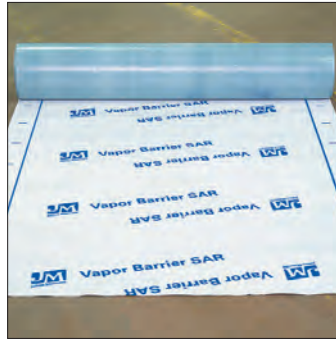


Component
M
 Membrane
 Multi-Ply
Type
PT
 Protection

JM Vapor Barrier SA

Polyethylene-reinforced, self-adhering SBS vapor barrier.

SIZE	SKU
45" × 134'	70001673



Component
M
 Membrane
 Multi-Ply
Type
PT
 Protection

JM Vapor Barrier SAR

Fiber glass-reinforced, polyethylene-surfaced, self-adhering SBS vapor barrier.

SIZE	SKU
39" × 105'	90029573



FASTENERS & PLATES



Component

F
Fastening

Multi-Ply
Single Ply

Type

I
Insulation

UltraFast® Fasteners

#12, case-hardened steel, polymer-coated fastener with a butress thread design that provides maximum pullout values and minimizes fastener backout.

SIZE	HEAD	QTY/BOX	SKU
1 5/8"	Phillips	1,000/Box	70000147
2 1/4"	Phillips	1,000/Box	70000148
3"	Phillips	1,000/Box	70002653
4"	Phillips	1,000/Box	70002660
5"	Phillips	1,000/Box	70000153
6"	Phillips	1,000/Box	70000154
7"	Phillips	1,000/Box	70000155
8"	Phillips	1,000/Box	70000156



Component

F
Fastening

Multi-Ply
Single Ply

Type

I
Insulation

UltraFast® Plates

UltraFast Locking Plastic Plates are 3" round, high-strength polypropylene plates with a special locking feature. UltraFast Metal Plates are 3" round or square, premium Galvalume®* coated steel metal plates.

SIZE	SHAPE & MAT.	QTY/BOX	SKU
3"	Sq. Metal	1,000/Box	70000144
3"	Rnd. Metal	1,000/Box	70000143
3"	Rnd. Plastic	1,000/Box	70000143



Component

F
Fastening

Multi-Ply
Single Ply

Type

I
Insulation

UltraFast® AccuTrac™ Plates

This recessed or flat-bottomed square plate is paired with the standard UltraFast Fastener when using the UltraFast® AccuTrac™ Automated Insulation Fastening System. The AccuTrac tool positions the plate and installs fasteners in a one-step process. (AccuTrac tool sold separately, not by JM.)

SIZE	QTY/BOX	SKU
3"	1,000/Box	70000146

*Galvalume is a registered trademark of BIEC International, Inc. and some of its licensed producers.



Component
F
 Fastening
 Multi-Ply
 Single Ply
Type
I
 Insulation

Nail-Lok™ SD

Nailboard (regular and vented) fastener for use with steel decks.

SIZE	HEAD	QTY/BOX	SKU
3"	Star	250/Box	70004275
3 1/2"	Star	250/Box	70004276
4"	Star	250/Box	70004277
4 1/2"	Star	250/Box	70004278
5"	Star	250/Box	70004279
5 1/2"	Star	250/Box	70004280
6"	Star	250/Box	70004281
6 1/2"	Star	250/Box	70004282
7"	Star	250/Box	70004283
7 1/2"	Star	250/Box	70004284
8"	Star	250/Box	70004285



Component
F
 Fastening
 Multi-Ply
 Single Ply
Type
I
 Insulation

Nail-Lok™ WD

Nailboard (regular and vented) fastener for use with wood decks.

SIZE	HEAD	QTY/BOX	SKU
2 7/8"	Star	250/Box	70004264
3 3/4"	Star	250/Box	70004265
4 1/2"	Star	250/Box	70004267
5"	Star	250/Box	70004268
5 1/2"	Star	250/Box	70004269
6"	Star	250/Box	70004270
6 1/2"	Star	250/Box	70004271
7"	Star	250/Box	70004272
7 1/2"	Star	250/Box	70004273
8"	Star	250/Box	70004274



Component
F
 Fastening
 Multi-Ply
 Single Ply
Type
I
 Insulation

Lite Deck Fasteners

Lite Deck Fasteners come with a square drive and offer coarse thread to provide high pullout resistance.

SIZE	QTY/BOX	SKU
2 5/8"	500/Box	70000757
3"	500/Box	70000621
4"	500/Box	70000622
5"	250/Box	70000668
6"	250/Box	70000625
7"	250/Box	70000624
8"	250/Box	70000703
9"	125/Box	70000702
10"	125/Box	70000705
12"	125/Box	70000704



Component

F

Fastening
Multi-Ply
Single Ply

Type

M

Membrane

High Load Fasteners

Blue, corrosion-resistant #15 fastener with a #3 Phillips head and a drill point designed for quick installation in new or re-roof applications.

SIZE	HEAD	QTY/BOX	SKU
1.25"	Phillips	1,000/Box	70000188
2"	Phillips	1,000/Box	70000189
3"	Phillips	1,000/Box	70000190
4"	Phillips	1,000/Box	70000113
5"	Phillips	1,000/Box	70000114
6"	Phillips	1,000/Box	70000115
7"	Phillips	1,000/Box	70000116
8"	Phillips	1,000/Box	70000191
9"	Phillips	1,000/Box	70000192
10"	Phillips	1,000/Box	70000193
12"	Phillips	1,000/Box	70000194
14"	Phillips	1,000/Box	70000195
16"	Phillips	1,000/Box	70000196
18"	Phillips	1,000/Box	70000197
20"	Phillips	1,000/Box	70000198



Component

F

Fastening
Single Ply

Type

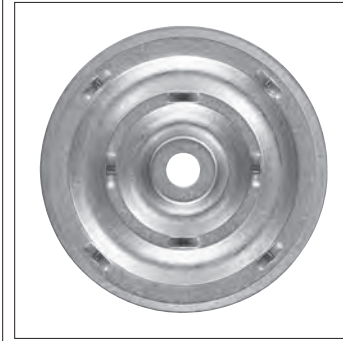
M

Membrane

High Load Plates

Heavy-duty, Galvalume®* coated steel seam plates with barbs.

SIZE	QTY/BOX	SKU
2 3/8"	1,000/Box	70000184



Component

F

Fastening
Multi-Ply
Single Ply

Type

M

Membrane

High Load AccuSeam™ Plates

This Galvalume®* coated steel plate with eye hooks is paired with the standard High Load Fastener when using the High Load AccuSeam System. The system positions the plate and installs the High Load Fastener in a one-step, continuous process. (AccuSeam System sold separately, not by JM.)

SIZE	QTY/BOX	SKU
2 3/8"	1,000/Box	70000187

*Galvalume is a registered trademark of BIEC International, Inc. and some of its licensed producers.



Component

F

Fastening
Multi-Ply
Single Ply

Type

M

Membrane

Extra High Load Fasteners

#15 fastener with a larger #3 Phillips head and a drill point designed for quick installation in new or re-roof applications.

SIZE	HEAD	QTY/BOX	SKU
2"	Phillips	1,000/Box	70000199
3"	Phillips	1,000/Box	70000200
4"	Phillips	500/Box	70000117
5"	Phillips	500/Box	70000118
6"	Phillips	500/Box	70000119
7"	Phillips	250/Box	70000120
8"	Phillips	250/Box	70000121
10"	Phillips	250/Box	70000655



Component

F

Fastening
Single Ply

Type

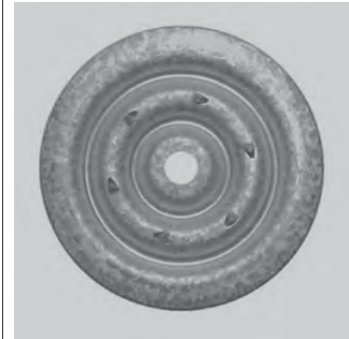
M

Membrane

Extra High Load Plates

Galvalume[®]* coated steel plate with eye hooks and an oversized diameter hole to accommodate the larger wire size of the Extra High Load Fastener.

SIZE	QTY/BOX	SKU
3"	500/Box	70000185



Component

F

Fastening
Single Ply

Type

M

Membrane

APB Plates

Galvalume[®]* coated steel round plate with barbs provides an even distribution of loads and eliminates sharp corners that can damage the insulation or membrane.

SIZE	QTY/BOX	SKU
2"	1,000/Box	70000183

*Galvalume is a registered trademark of BIEC International, Inc. and some of its licensed producers.



Component

- F**
Fastening
Single Ply
- I**
Insulation
- M**
Membrane

JM PVC RhinoPlate®

JM PVC RhinoPlate is a 3" round specially coated Galvalume®* plate with a recessed center and raised flat bonding surface. The JM PVC RhinoPlate is a roof attachment system that uses heat induction technology.

SIZE	QTY/BOX	SKU
3"	500/Box	70002959



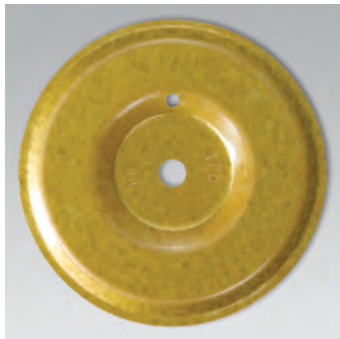
Component

- F**
Fastening
Single Ply
- I**
Insulation
- M**
Membrane

JM PVC TreadSafe RhinoPlate®

TreadSafe is a tube fastening system designed for use with RhinoBond plates in compressible insulation. Tubes are designed to accommodate the normal deflection of compressible roof insulation, minimizing the potential for the fastener to penetrate the roofing membrane.

SIZE	QTY/BOX	SKU
3"	500/Box	70001475



Component

- F**
Fastening
Single Ply
- I**
Insulation
- M**
Membrane

JM TPO RhinoPlate®

JM TPO RhinoPlate is a 3" round specially coated Galvalume®* plate with a recessed center and raised flat bonding surface. The JM TPO RhinoPlate is a roof attachment system that uses heat induction technology.

SIZE	QTY/BOX	SKU
3"	500/Box	70000656



Component

- F**
Fastening
Single Ply
- I**
Insulation
- M**
Membrane

JM TPO TreadSafe RhinoPlate®

TreadSafe is a tube fastening system designed for use with RhinoBond plates in compressible insulation. Tubes are designed to accommodate the normal deflection of compressible roof insulation, minimizing the potential for the fastener to penetrate the roofing membrane.

SIZE	QTY/BOX	SKU
3"	500/Box	70001413

*Galvalume is a registered trademark of BIEC International, Inc. and some of its licensed producers.



Component

F

Fastening
Multi-Ply
Single Ply

Type

I

Insulation

M

Membrane

All-Purpose Fasteners

All-Purpose Fasteners are #14 case-hardened steel fasteners with a #3 Phillips head. The point is designed for quick installation in new or re-roof applications.

SIZE	HEAD	QTY/BOX	SKU
1 1/2"	Phillips	1,000/Box	70000749
1 3/4"	Phillips	1,000/Box	70000747
2"	Phillips	1,000/Box	70000106
3"	Phillips	1,000/Box	70000107
4"	Phillips	1,000/Box	70000108
5"	Phillips	500/Box	70000109
6"	Phillips	500/Box	70000110
7"	Phillips	500/Box	70000111
8"	Phillips	500/Box	70000112
9"	Phillips	500/Box	70000735
10"	Phillips	500/Box	70000743
11"	Phillips	500/Box	70000607
12"	Phillips	250/Box	70000750
14"	Phillips	250/Box	70000751
16"	Phillips	250/Box	70000752
18"	Phillips	250/Box	70000753
20"	Phillips	250/Box	70000754
22"	Phillips	250/Box	70000756
24"	Phillips	250/Box	70000755



Component

F

Fastening
Multi-Ply
Single Ply

Type

I

Insulation

M

Membrane

Polymer Auger Fasteners

Polymer Auger Fasteners are glass-reinforced nylon fasteners with an internal 1/4" square drive and a 1" diameter head. Polymer Auger Fasteners are available with Galvalume®* coated, metal stress plates, designed to lock into the fastener head.

SIZE	QTY/BOX	SKU
2 1/2"	500/Box	70000209
3"	500/Box	70000210
3 1/2"	500/Box	70000211
4"	500/Box	70000212
4 1/2"	500/Box	70000213
5"	500/Box	70000214
5 1/2"	500/Box	70000215
6"	500/Box	70000216
6 1/2"	500/Box	70000217
7"	500/Box	70000218
8"	500/Box	70000724

*Galvalume is a registered trademark of BIEC International, Inc. and some of its licensed producers.



Component

F

Fastening
Multi-Ply
Single Ply

Type

I

Insulation

M

Membrane

Structural Concrete Deck Fasteners

Structural Concrete Deck Fasteners are diamond point, non-threaded fasteners for hammer-in installation of insulation and single ply membranes to structural concrete. These carbon steel fasteners have a corrosion-resistant coating.

SIZE	QTY/BOX	SKU
2"	500/Box	70000221
2 1/2"	500/Box	70000222
3"	500/Box	70000223
3 1/2"	500/Box	70000224
4"	500/Box	70000225
4 1/2"	500/Box	70000680
5"	500/Box	70000226
6"	500/Box	70000227
7"	500/Box	70000228
8"	500/Box	70000229
9"	250/Box	70000230
10"	250/Box	70000231



Component

F

Fastening
Multi-Ply
Single Ply

Type

I

Insulation

M

Membrane

JM RetroDriller Fasteners

Designed for attaching single ply membrane systems to structural purlins (up to 3/16") in standing seam metal roof retrofit applications.

SIZE	QTY/BOX	SKU
4"	500/Box	70002823
5"	500/Box	70001478
6"	500/Box	70001480
8"	500/Box	70001481
10"	500/Box	70001482



CLEANERS PRIMERS ADHESIVES SEALANTS



Component
CL
Cleaner

Single Ply

Type
M
Membrane

JM TPO Membrane Cleaner

One-part solvent cleaner used to remove dirt, asphalt or other contaminants from TPO membranes.

SIZE	QTY/BOX	SKU
1 Gallon	4/Box	70005185
5 Gallons	—	70005184



Component
CL
Cleaner

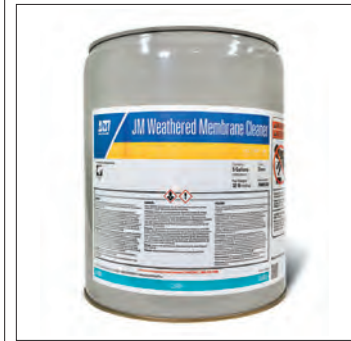
Single Ply

Type
M
Membrane

JM Single Ply Membrane Cleaner [Low VOC]

Low-VOC solvent cleaner used to remove contaminants from TPO and PVC membranes.

SIZE	QTY/BOX	SKU
1 Gallon	4/Box	70000608
5 Gallons	—	70000671



Component
CL
Cleaner

Single Ply

Type
M
Membrane

JM Weathered Membrane Cleaner

Cleans the release agent and dirt from JM TPO and JM EPDM membranes.

SIZE	SKU
5 Gallons	70005183



Component
PR
 Primer
 Single Ply
Type
M
 Membrane

JM Single Ply Membrane Primer [Low VOC]

Synthetic polymer-based primer for JM TPO and EPDM membrane surfaces.

SIZE	SKU
3 Gallons	70000744



Component
PR
 Primer
 Single Ply
Type
M
 Membrane

JM TPO Membrane Primer

One-part membrane primer used to prepare surface for adhering TPO peel-and-stick products.

SIZE	SKU
3 Gallons	70000543



Component
PR
 Primer
 Single Ply
Type
M
 Membrane

JM EPDM Tape Primer Plus

Tack-back functionality for detail work in vertical applications and seam work in horizontal applications.

SIZE	QTY/BOX	SKU
1 Gallon	4/Box	70006092
3 Gallons	—	70006096



Component
PR
 Primer
 Single Ply
Type
M
 Membrane

JM EPDM Tape Primer Plus [Low VOC]

This primer is used to prime JM EPDM membrane surfaces for adhering JM EPDM tape and peel-and-stick products.

SIZE	QTY/BOX	SKU
1 Gallon	4/Box	70006264
3 Gallons	—	70006263



Component
AD
Adhesive
Single Ply
Type
M
Membrane

JM All Season Sprayable Bonding Adhesive

This adhesive can be used to adhere TPO or EPDM membranes in temperatures ranging from 25 degrees and rising. It can easily be sprayed in the field or on vertical surfaces.

SIZE	SKU
45 lb. Canister	70006327



Component
AD
Adhesive
Single Ply
Type
M
Membrane

JM PVC All Season Sprayable Bonding Adh.

JM PVC All Season Sprayable Bonding Adhesive is an aerosol bonding adhesive that can be used for PVC adhered roofing systems and wall flashings.

SIZE	SKU
45 lb. Canister	70007720



Component
CL
Cleaner
Single Ply
Type
AD
Adhesive

JM Sprayable Bonding Adhesive Flush [Low VOC]

To clean JM All Season Sprayable Bonding Adhesive accessories for temporary or long-term storage.

SIZE	SKU
13.5 lb. Canister	70006370



Component
AD
Adhesive
Single Ply
Type
A
Accessory

JM All Season Sprayable Bonding Adhesive Accessories

ACCESSORY	SKU
Applicator	70006364
Extended Applicator	70006365
Tip (5 pack)	70006366
6' Hose	70006367
12' Hose	70006368
18' Hose	70006369



Component
AD
Adhesive
Single Ply

Type
M
Membrane

JM Membrane Bonding Adhesive

For adhering JM TPO and EPDM membranes to approved substrates.

SIZE	SKU
5 Gallon Pail	70005181



Component
AD
Adhesive
Single Ply

Type
M
Membrane

JM LVOC Membrane Adhesive

One-part, low-VOC synthetic polymer-based membrane adhesive.

SIZE	SKU
5 Gallon Pail	70004668



Component
AD
Adhesive
Single Ply

Type
M
Membrane

JM TPO Water Based Membrane Adhesive

Polymeric adhesive designed for bonding TPO membranes to approved roofing substrates.

SIZE	SKU
5 Gallon Pail	70004300



Component
AD
Adhesive
Single Ply

Type
M
Membrane

JM EPDM Water Based Membrane Adhesive

For adhering JM EPDM membrane to approved roofing substrates.

SIZE	SKU
5 Gallon Pail	70005182



Component
AD
Adhesive
Single Ply

Type
M
Membrane

JM PVC Membrane Adhesive

Polymer-based adhesive for adhering smooth-backed PVC membranes to approved substrates.

SIZE	SKU
5 Gallon Pail	70000240



Component
AD
Adhesive
Single Ply

Type
M
Membrane

JM PVC Water Based Membrane Adhesive

Our JM PVC Water Based Membrane Adhesive allows for great vertical-wall application and offers a color-change indicator and new and improved spreadability to be used to adhere JM PVC membranes.

SIZE	SKU
5 Gallon Pail	70006439



Component
AD
Adhesive
Single Ply

Type
M
Membrane

JM Roofing System Urethane Adhesive

Two-part polyurethane adhesive, used to adhere insulation in all single ply systems.

SIZE	PART	SKU
5 Gallon Pail	Part 1	70002641
5 Gallon Pail	Part 2	70002642
1,500 mL Cartridge	—	70002638



Component
AD
Adhesive
Multi-Ply
Single Ply

Type
I
Insulation

B
Cover Board

JM Two-Part Urethane Insulation Adhesive

Two-part cold-application adhesive for insulation and cover boards, used to adhere insulation in all single ply systems.

SIZE	PART	SKU
5 Gallon Bag-in-Box	Part 1	70000023
5 Gallon Bag-in-Box	Part 2	70000024
1,500 mL Cartridge	—	70000022



Component
AD
Adhesive
Multi-Ply
Single Ply

Type
I
Insulation

M **B**
Membrane Cover Board

JM Two-Part Urethane Insulation Adh. Canister

A two-component polyurethane adhesive used for attaching fleece-backed membranes to insulation and insulation boards to the roof deck or to other insulation boards and used in all single ply systems.

SIZE	PART	SKU
10 lb. Canister	Part 1	70005637
8.5 lb. Canister	Part 2	70005638



Component
AD
Adhesive
Multi-Ply
Single Ply

Type
I
Insulation

B
Cover Board

JM One-Step Foamable Adhesive

Polyurethane adhesive for attaching insulation/cover boards to the roof deck or other insulation boards and used to adhere insulation in all single ply systems.

SIZE	SKU
1,500 mL Cartridge	70002671



Component
SE
Sealant
Single Ply

Type
FL
Flashing

JM TPO Pourable Sealer

JM TPO Pourable Sealer is used as a penetration pocket filler.

QTY/BOX	SKU
2 Kits /Box	70000285



Component
SE
Sealant
Single Ply

Type
FP
Penetration

JM One-Part Pourable Sealer

JM One-Part Pourable Sealer is used as a penetration pocket filler.

QTY/BOX	COLOR	SKU
4/Box	Grey	70004982



Component
SE
Sealant
Single Ply

Type
M
Membrane

FL
Flashing

JM Single Ply LVOC Caulk

Seal flashing terminations, peel-and-stick products and exposed edges of JM membrane cement splices.

SIZE	COLOR	QTY/BOX	SKU
10.3 oz.	White	30/Box	70005140
10.3 oz.	Black	30/Box	70005139



Component
SE
Sealant
Single Ply

Type
M
Membrane

FL
Flashing

JM Single Ply Sealing Mastic

One-part, butyl polymer-based water cutoff mastic to seal JM Single Ply membranes to terminations and other penetrations.

SIZE	QTY/BOX	SKU
11 oz.	12/Box	70004150



Component
SE
Sealant
Single Ply

Type
M
Membrane

JM TPO LVOC Edge Sealant

One-part, edge-sealing agent for cut TPO membranes.

SIZE	COLOR	QTY/BOX	SKU
16 oz.	Clear	12/Box	70005398
16 oz.	White	12/Box	70005399



Component
SE
Sealant
Single Ply

Type
FP
Penetration

JM EPDM/PVC Pourable Sealer

Sealant for EPDM Peel & Stick Pourable Sealer Pockets or PVC systems to seal irregular penetrations.

QTY/BOX	SKU
3 Kits/Box	70000071



Component

SE

Sealant

Single Ply

Type

M

Membrane

JM PVC Edge Sealant

To seal edges of JM PVC membrane seams after the membrane has been welded to itself or to JM PVC-Coated Metal.

SIZE	COLOR	QTY/BOX	SKU
16 oz.	Clear	12/Box	70000298



717 17th St.
Denver, CO 80202
(800) 922-5922
www.jm.com/roofing

@JohnsManvilleRoofing



@JohnsManvilleRoofing



@JMRoofingSystem



JohnsManvilleRoofingSystems



Johns Manville Commercial
Roofing Systems



Above it all

