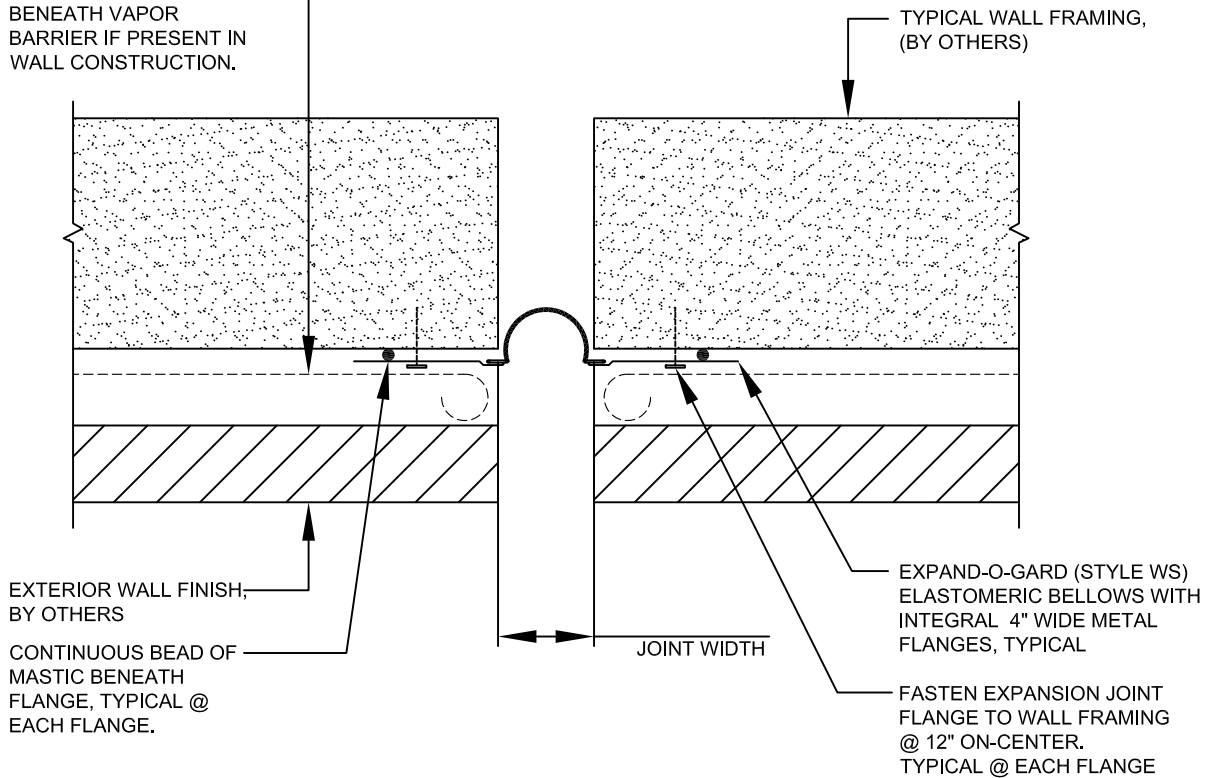


**EXPAND-O-GARD BELLOWS
WIDTH IS BASED ON THE
CLEAR JOINT WIDTH. SEE
BELLOWS WIDTH SELECTION
TABLE BELOW.**

INSTALL EXPAND-O-GARD
BENEATH VAPOR
BARRIER IF PRESENT IN
WALL CONSTRUCTION.



JOINT WIDTH RANGES	BELLOWS SIZE (IN)
1" - 2 ⁵ / ₈ "	4"
2 ³ / ₄ " - 4"	6"
4 ¹ / ₈ " - 5 ¹ / ₄ "	8"
5 ³ / ₈ " - 6 ⁵ / ₈ "	10"
6 ³ / ₄ " - 8"	12"

CHART NOTES:

- BELLOWS WIDTH SELECTION TABLE IS BASED ON 50% JOINT MOVEMENT. CONTACT EXPAND-O-GARD TECHNICAL SERVICE AT 800-445-1500 FOR BELLOWS SELECTION REQUIRING GREATER THAN 50% JOINT MOVEMENT.
- BELLOWS SIZES LISTED ARE JOHNS MANVILLE STANDARD SIZES.
- LARGER BELLOWS SIZES ARE AVAILABLE AS A CUSTOM ORDER.

NOTES:

- FOR ADDITIONAL APPLICATION INFORMATION OR TECHNICAL SERVICE PLEASE CONTACT OUR EXPAND-O-GARD TECHNICAL SERVICE AT 800-445-1500
- THIS DRAWING IS FOR REPRESENTATION PURPOSES ONLY. CONSULT EXPAND-O-GARD TECHNICAL SERVICE FOR DEVIATIONS FROM THE ABOVE DETAIL
- FACTORY FABRICATED TRANSITIONS, MITERS AND INTERSECTIONS ARE AVAILABLE, PLEASE CONTACT EXPAND-O-GARD TECHNICAL SERVICE FOR ADDITIONAL INFORMATION.
- CONTACT JM EXPAND-O-GARD TECHNICAL SERVICE FOR INSTALLATION INSTRUCTIONS.

EXPAND-O-GARD; WALL TO WALL (STYLE WS)

DRAWING NO.

WS-WW

SCALE
NTS

ISSUE DATE
5/8/12

REV. NO.

CAD FILE:
STANDARD EOF CUT SHEETS.DWG

Johns Manville is a Manufacturer of commercial roofing products and offers this general conceptual information to you as a courtesy. This complimentary assistance is not to be used or relied upon by anyone as a substitute for professional engineering design and documentation required by building code, contract, or applicable law. By accepting these comments you agree they do not constitute any representations, endorsements of, or an assumption by Johns Manville of any liability for either the adequacy of the design of this building or any other material not supplied by Johns Manville.

