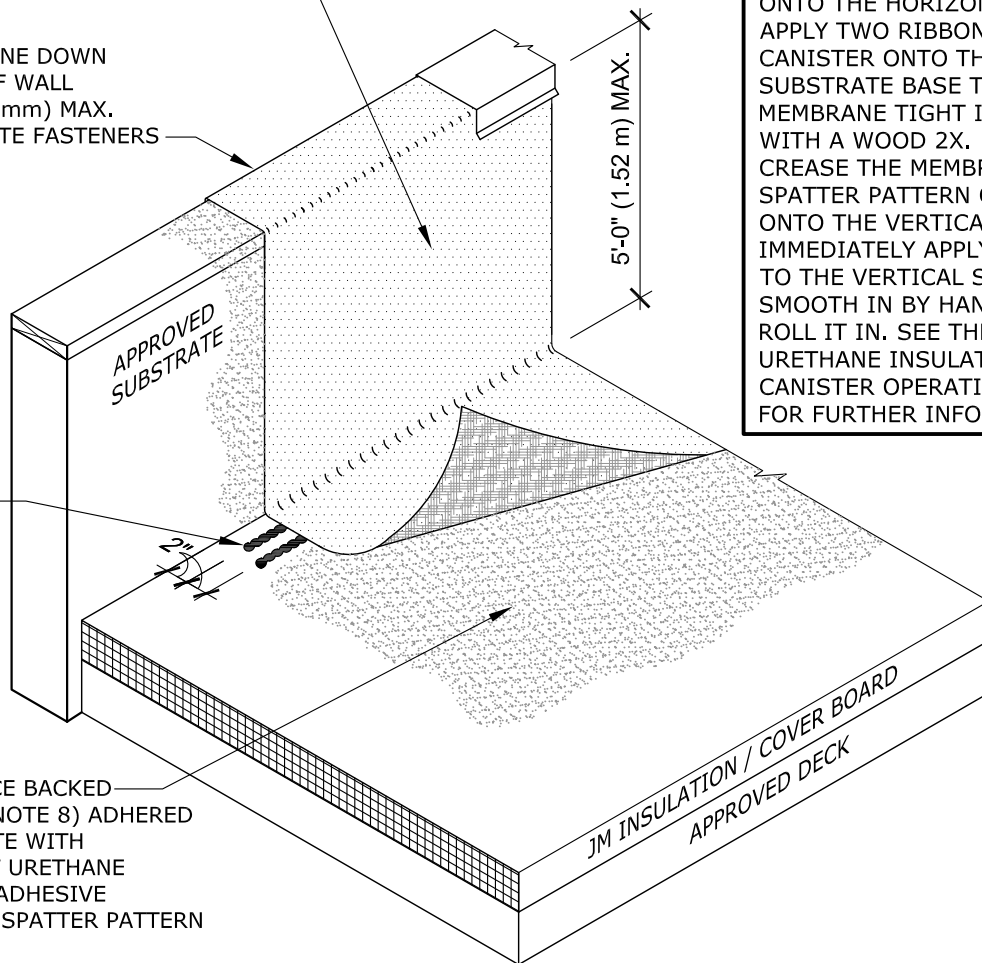


JM PVC FLEECE BACKED MEMBRANE (NOTE 8) ADHERED TO WALL WITH JM TWO PART URETHANE INSULATION ADHESIVE CANISTER IN SPATTER PATTERN APPLIED VERTICALLY

INSTALL MEMBRANE DOWN OUTSIDE FACE OF WALL FASTEN 12" (305 mm) MAX. WITH APPROPRIATE FASTENERS

TWO RIBBONS OF JM TWO PART URETHANE INSULATION ADHESIVE CANISTER AT BASE TIE-IN

JM PVC FLEECE BACKED MEMBRANE (NOTE 8) ADHERED TO SUBSTRATE WITH JM TWO PART URETHANE INSULATION ADHESIVE CANISTER IN SPATTER PATTERN



JM TWO PART UIA (URETHANE INSULATION ADHESIVE CANISTER) IS APPLIED TO THE SUBSTRATE ON HORIZONTAL AND VERTICAL SURFACES.

IMMEDIATELY AFTER APPLYING THE SPATTER PATTERN OF TWO PART UIA ONTO THE HORIZONTAL SUBSTRATE, APPLY TWO RIBBONS OF TWO PART UIA CANISTER ONTO THE HORIZONTAL SUBSTRATE BASE TIE-IN. PUSH THE MEMBRANE TIGHT INTO THE CORNER WITH A WOOD 2X. DO NOT FOLD OR CREASE THE MEMBRANE. APPLY A SPATTER PATTERN OF TWO PART UIA ONTO THE VERTICAL SUBSTRATE AND IMMEDIATELY APPLY THE MEMBRANE TO THE VERTICAL SUBSTRATE AND SMOOTH IN BY HAND THEN BROOM OR ROLL IT IN. SEE THE JM TWO PART URETHANE INSULATION ADHESIVE CANISTER OPERATING INSTRUCTIONS FOR FURTHER INFORMATION.

NOTES:

1. REFER TO JOHNS MANVILLE WEBSITE (www.jm.com) FOR MOST UP-TO-DATE INFORMATION.
2. PLEASE SEE SINGLE PLY FLASHING SPECIFICATIONS FOR A FULL DESCRIPTION OF INSTALLATION INSTRUCTIONS AND REQUIREMENTS WHICH ARE CONSIDERED A PART OF THIS DETAIL.
3. ANY CARPENTRY OR METAL WORK SHOULD BE DESIGNED AND CONSTRUCTED IN ACCORDANCE WITH LOCAL CODE REQUIREMENTS AND/OR PROJECT SPECIFICATIONS. THESE COMPONENTS SHOULD BE REVIEWED AND APPROVED BY A LICENSED DESIGN PROFESSIONAL. CONTACT JM TECHNICAL FOR METAL OPTIONS TO BE INCLUDED WITHIN THE JM NDL GUARANTEE.
4. JM PVC EDGE SEALANT IS OPTIONAL ON ALL CUT OR NON-ENCAPSULATED EDGES OF REINFORCED MEMBRANE. THIS INCLUDES FACTORY CUT MEMBRANE (SEE DETAIL P-MS-01).
5. A SUFFICIENT BACKER FASTENING STRIP MUST BE INSTALLED BEHIND SUBSTRATES DIRECTLY TO STUDS FOR INSTALLATION OF TERMINATION BARS AND FLASHINGS WHEN SUBSTRATES WILL NOT SUPPORT A PROPER, SECURE INSTALLATION. SEE DETAIL P-FW-M2I FOR BACKER DETAIL.
6. FOR JM APPROVED INTERMEDIATE FLASHING FASTENING METHODS SEE P-FW-I DETAILS. MINIMUM FLASHING TERMINATION HEIGHT IS 8" (203 mm) ABOVE ROOF SURFACE. INTERMEDIATE ADHERED MEMBRANE FASTENING REQUIRED AT 5'-0" (1.52 m) INTERVALS MAXIMUM, AND 18" (457 mm) HIGH MAXIMUM FOR NON ADHERED MEMBRANE ON CMU, BRICK, SMOOTH CONCRETE WALLS, OR ANY JM APPROVED SUBSTRATE, IE. PLYWOOD, SECUROCK GYPSUM-FIBER AND DENSDECK . SEE DETAIL P-FW-M2I FOR JM APPROVED FASTENING METHODS.
7. FOR JM APPROVED TOP OF WALL FLASHING METHODS SEE P-FW-T DETAILS.
8. JM PVC FLEECE BACKED MEMBRANE OPTIONS INCLUDE JM PVC FB WITH DOW™ ELVALOY® KEE POLMER AND JM PVC SD PLUS FB.

DRAWING NO.

P-FW-B7I

PVC FLEECE BACKED IN TWO PART UIA BASE & WALL FLASHING SPATTER

FLASHING WALL

MEMBRANE TYPE:
JM PVC FLEECE BACKED

SCALE
N.T.S

ISSUE DATE
12-07-23

MAXIMUM GUARANTEE TERM:
30 YR.

Johns Manville is a manufacturer of commercial roofing products and offers this general conceptual information to you as a courtesy for general educational purposes only. This complimentary assistance is not to be either used or relied upon by anyone as a substitute for professional engineering design and documentation required by any building code, contract, or applicable law. By accepting the general conceptual information, you agree it does not constitute any representations, endorsements of, or an assumption by Johns Manville of any duty or liability for either the adequacy of the design of a building, any of its components or the sufficiency of any construction.

